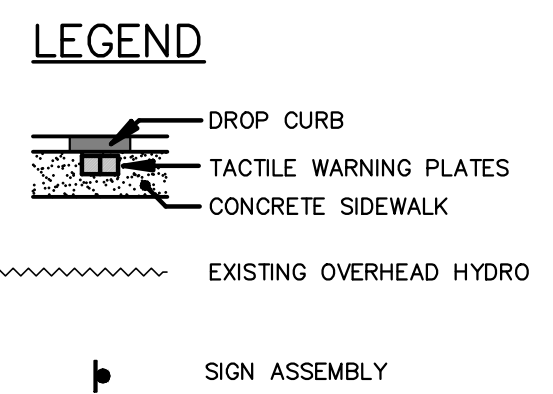
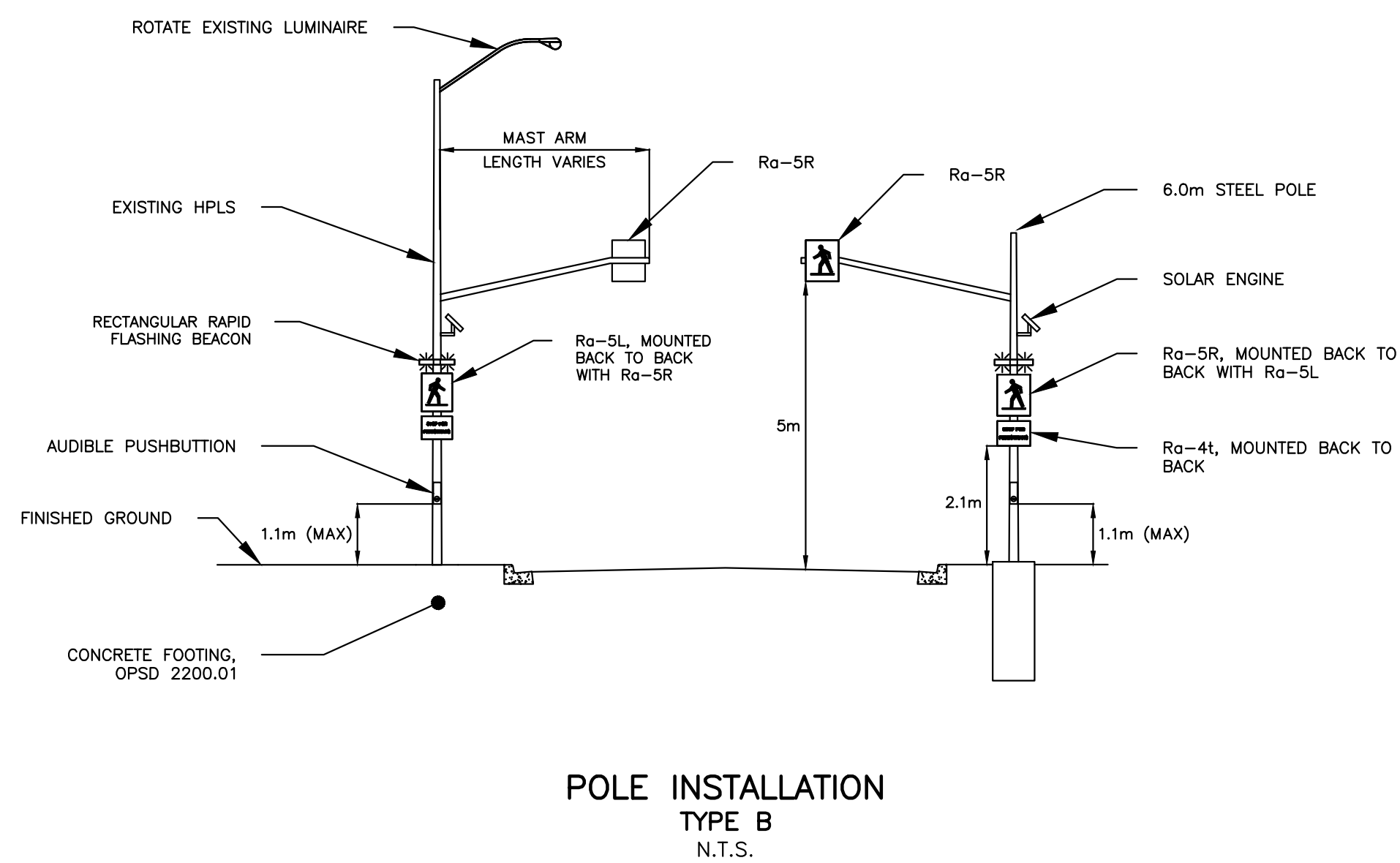
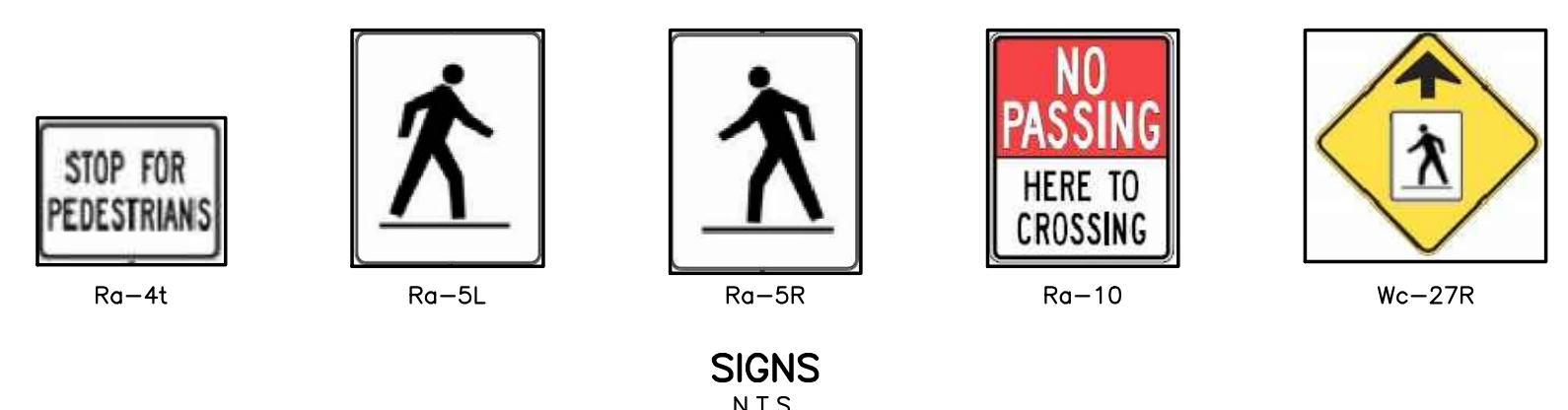


NOTE:
THE LOCATION OF UTILITIES IS APPROXIMATE ONLY AND SHOULD BE DETERMINED BY CONSULTING THE MUNICIPAL AUTHORITIES AND UTILITY COMPANIES CONCERNED. THE CONTRACTOR SHALL PROVE THE LOCATION OF UTILITIES AND SHALL BE RESPONSIBLE FOR ADEQUATE PROTECTION AGAINST DAMAGE.



- NOTE**
- EXISTING CENTRELINE PAVEMENT MARKING SHALL BE OBLITERATED BETWEEN YIELD LINES
 - NEW PAVEMENT MARKINGS ARE TO BE DURABLE
 - LUMINAIRES TO BE 7.0m ABOVE GROUND SURFACE
 - REMOVE EXISTING "SCHOOL CROSSING" AND "SCHOOL CROSSING AHEAD" SIGNS.



No	DATE	REVISION	INITIAL

PRELIMINARY

PXO CONSTRUCTION
SMITH STREET
INTERSECTION WITH CONESTOGA STREET
ARTHUR, ON

TOWNSHIP OF WELLINGTON NORTH
7490 SIDEROAD 7 WEST P.O BOX 125
KENILWORTH ONTARIO N

PLAN

PROJECT No
A5528 R04

DRAWN BY: N/A

CHECKED BY: T.J.K

APPROVED BY: T.J.K

DATE: JUNE 2023



SCALES

1:250 N/A

HORIZONTAL VERTICAL

DRAWING NUMBER **01**