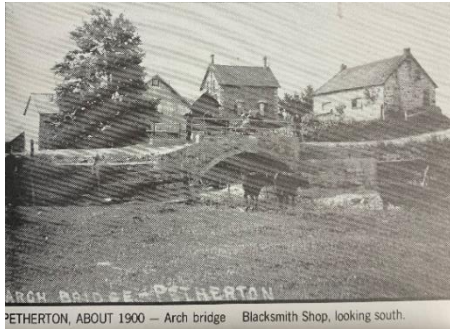




Preserving, promoting and developing Wellington North's unique cultural resources to build a vibrant community and a prosperous economy.

CULTURAL MOMENT FOR MAY 10TH, 2021 CELEBRATES THE HAMLET OF PETHERTON

Petherton was once a thriving community, at the corners of Sideroad 9 and Hwy. 6, and extended north for over a mile. Located four miles northwest of Arthur, in the former Arthur Township and like many rural hamlets, it had its beginning in 1860 when a church was built. The Spark family donated the land and the South Arthur Baptist Church was built along with the Petherton Pioneer Cemetery. The church was dismantled in 1892 when a new one was built in Kenilworth.



A post office, the first in the township, was established in 1869 and after moving its location several times, and having had several postmasters, closed in 1914. There were two blacksmith shops over the years and the last one closed in 1914 and the building was bulldozed in 1950 when the highway was widened. At one time a chopping mill was situated on eight acres of property and a steam engine provided the power. The water for the boiler came from the creek at the back of the mill. A railway station was built in 1872 when the Toronto, Grey and Bruce Railway established their line through Petherton.

Over the years the cemetery fell into neglect and it was restored in the fall of 1977 by descendants of the pioneers buried there. At that time, they cemented the surviving grave markers into a Cairn and a historic plaque was placed. Money was donated by local families and Arthur Township Council looked after the work and supplied extra money for the restoration.

During the restoration, many of the buried stones were found, 30 in total, and they marked the graves of the people buried from the old Baptist Church that had once stood on the site. These stones dated back to the 1860's and are now lying in a semi-circle however due to the age of them, many of the inscriptions are illegible.



A plaque with the following inscription has been placed at the cemetery:



"In 1860 several Baptist families in the area built a church and established the cemetery known as the Petherton Pioneer Cemetery. Blyth, Edwards, Landon and Spark families were a few of the pioneers of the area. By the 1870's Petherton had become a thriving hamlet with a population of 155. Petherton was an agriculture community, which also consisted of several houses, two hotels, two blacksmith shops, a post office, a carpenter, two stores, two carriage makers, a chopping mill and a kiln for making bricks".

Submitted by Penny Renken, Wellington North Cultural Roundtable. Resources used inc. Wellington North Simply Explore & *From Then Till Now – A History of Arthur Township 1850-1985* (article by Mrs. Wm. Prentice).