

ADDENDUM NO. 04

Project No.: 2160.00

Contract: General

Date: 23-August-2024

This document includes 10 pages and was emailed on 23-August-2024.

To: All Bidders

Project: Arthur Area Community Centre Renovation

Location: 158 Domville St.
Arthur, Ontario N0G 1A0

Owner: Township of Wellington-North

Address: 7490 Sideroad 7 W, PO Box 125
Kenilworth, Ontario, N0G 2E0

Consultant: JPM Architecture Inc.
51 Kingston Street,
Goderich, Ontario N7A 3K3

PART 1 - INTENT

- 1.1 This Addendum is issued to provide modifications and clarifications during bidding.
- 1.2 Except as otherwise specified herein, and as shown on accompanying Drawings, work required by this Addendum shall be in accordance with Drawings dated 17-July-2024 and including subsequent Addenda.
- 1.3 Bidders are required to take these Addendum items into account when preparing their Bid.

PART 2 - DRAWINGS AND DOCUMENTS

- 2.1 The following attachments accompany and form part of the Addendum.
Mechanical Addendum 02 produced by DEI Consulting Engineers, dated 22-August-2024.

PART 3 - DETAILS

3.1 Drawing Revisions:

- .1 There are no Drawing revisions issued with this Addendum.

PART 4 - DISTRIBUTION

- To Bidders
- Owner
- Consultants

August 22, 2024

Client: JPM Architecture Inc.
51 Kingston Street,
Goderich ON N7A 3K3

RE: Township of Wellington North, Arthur & Arena CC
Interior Renovations
Arthur, ON

Job #: 24061

Attn: Peg MacDonald, BA, M. Arch, OAA, MRAIC, Architect/Nicole Regier

ADDENDUM 02

MECHANICAL

Item 1

1.0 Contractor Tender Questions

.1 **Question:**

Will the heat traced sanitary in soffit require thermal insulation?

Answer:

Yes

.2 **Question:**

Plumbing notes indicate all above ground sanitary and vent completed in cast iron and copper DWV? Will PVC DWV or PVC XFR be an acceptable alternative for sanitary and venting?

Answer:

Yes

.3 **Question:**

Assuming the existing three (2) compartment sink is vented through existing drywall enclosure that extends from the counter to ceiling space. Will new venting be routed and enclosed this way?

Answer:

Yes, the intent was to reuse existing vent routing (and vent piping if sizing is suitable).

.4 **Question:**

Addendum #2 indicates removal and replacement of hand wash sink, are we to assume existing plumbing/drainage in wall meet code

Answer:

Hand sink has been relocated to the island, refer to this addendum. All plumbing and drainage in the wall should be removed.

.5 **Question:**

FD-1 was removed from schedule but is still on drawing. Is the new floor drain still required?

Answer:

Refer to schedule titled 'Plumbing Schedule (1 of 2)' on page M1.1 for FD-1, it was relocated on the page. Floor drain is required.



- .6 **Question:**
Note on M3.1 shows drain from new floor drain extending to existing 4"? Would a 2" floor drain be acceptable?
Answer:
Yes, resize to a 2" floor drain
- .7 **Question:**
The handwash sink, dishwasher, and three (3) compartment sink are shown tying into an existing 2" drain, with the amount of fixtures the load on the pipe is 6.5 and the maximum load is 6.
Answer:
As per mechanical schedules, compartment sink has a 1-1/2"Ø drain, as such total fixture load on the 2"Ø drain is 6 FU, not 6.5, 2"Ø drain pipe is sufficient.
- .8 **Question:**
The floor drain is shown connecting to the nearest sanitary line on the ground floor. The nearest drain we could locate without tearing into the ceiling was the men's washroom beside the main floor kitchen. Is the intent to cut up the floor in the men's washroom?
Answer:
As per question 6, resize to a 2"Ø pipe and route to same vertical drop the sink drain line is located.

Item 2

- 2.0 Reference Attached Reissued Drawing M1.1
.1 Handwash sink S-2 changed to counter mounted in plumbing schedule.

Item 3

- 3.0 Reference Attached Reissued Drawing M2.1
.1 Piping from existing handwash sink to be removed completely.

Item 4

- 4.0 Reference Attached Reissued Drawing M3.1
.1 New handwash sink moved to kitchen island.
.2 Trap added to drain from FD-1.
.3 Heat tracing added to hot and cold water lines in pipe chase.

Item 5

- 5.0 Reference Attached Reissued Drawing M3.2
.1 Grilles for exterior wall chase removed.

ELECTRICAL**Item 1**

- 1.0 Reference Attached Reissued Drawing E2.2
.1 In Kitchen/Bar '213', provide connection for heat trace of hot and cold water lines.



Item 2

2.0 Reference Attached Reissued Drawing E2.3

- .1 Within existing Panel 'F', provide one (1) 15A-1P 33mA ground-fault breaker at CCT - #41 for heat trace. Update panel directory as shown.



Ann Demaiter, P.Eng.

Partner

24061 Addendum 02 (M&E-Sink Relocation)(various reissued dwgs) Aug 22 24.docx
csp/sb/sdm



ELECTRIC DUCT HEATER SCHEDULE

CAPACITY INDICATED ON SCHEDULE REFER TO SPECIFICATION FOR CONSTRUCTION STANDARDS, ACCESSORIES AND ADDITIONAL INFORMATION.

Item	Type	Capacity (cfm)	Size	Air Temperature	Electric Heat Capacity	Electrical Voltage	Manufacturer & Model	Remarks
DH-1	FRONT END SUPPLEMENTAL COIL	400	12x8	60 90	4.0	208/1/60	THERMOLEC SC SERIES	

MUA SCHEDULE

CAPACITY INDICATED ON SCHEDULE REFER TO SPECIFICATION FOR CONSTRUCTION STANDARDS, ACCESSORIES AND ADDITIONAL INFORMATION.

Item	Type	Capacity (cfm)	Static (in)	Temp Rise (F)	Collar Size	Electric Heat Capacity	Electrical Voltage	Manufacturer & Model	Remarks
MUA-1	MINI INLINE MAKEUP AIR UNIT	300	0.2	60	8"	6.0	208/3/60	THERMOLEC FER SERIES	

VVT CONTROL DAMPER SCHEDULE w/ELECTRIC REHEAT

Item	Type	Capacity (cfm)			Size	Electric Heat		Remarks
		Design	Minimum	Maximum		Capacity kW	Voltage	
VAV-1.1	BYPASS DAMPER		1800	2800	14"x20"			
VAV-1.2	SINGLE TERMINAL CONTROL BOX	600	180	1020	12"x6"	3.2	12x8	REFER TO ELECTRICAL DWGS FOR VOLTAGE AND PHASE
VAV-1.3	SINGLE TERMINAL CONTROL BOX	1600	480	2720	16"x6"	8.6	12x8	REFER TO ELECTRICAL DWGS FOR VOLTAGE AND PHASE

GRILLE SCHEDULE

CAPACITY INDICATED ON SCHEDULE REFER TO SPECIFICATION FOR CONSTRUCTION STANDARDS, ACCESSORIES AND ADDITIONAL INFORMATION.

Item	Type	Equalizing Grid	Volume Damper	Acceptable Manufacturer	Description
D1	SQUARE CEILING DIFFUSER	YES	NONE	EH PRICE SCSA	MULTICONE, FULLY ADJUSTABLE, 24x24, STEEL CEILING DIFFUSER W/ROUND NECK. SUITABLE FOR LAY-IN T-BAR CEILING, OR DRYWALL CEILING WHEN C/W FRAME.
S1	SUPPLY GRILLE	NO	NONE	EH PRICE 32-FLA	DOUBLE DEFLECTION, 1/2" SPACING, ALUMINUM AIRFOIL BLADES PARALLEL TO LONG DIMENSION, C/W 1 1/4" FLAT BORDER & SCREWED FASTENING FOR SURFACE MOUNTING.
R1	CEILING RETURN GRILLE (NON-DUCTED)	NO	NONE	EH PRICE 80-CH	1/2x1/2x1/2 ALUMINUM EGGRATE CORE, C/W CHANNEL BORDER FOR LAY-IN T-BAR CEILING.
R2	CEILING RETURN GRILLE (DUCTED)	NO	NONE	EH PRICE 80-FA	1/2x1/2x1/2 ALUMINUM EGGRATE CORE, C/W 1 1/4" FLAT BORDER & SCREWED FASTENING FOR SURFACE MOUNTING.
E1	EXHAUST GRILLE (DUCTED)	NO	NONE	EH PRICE 80-FA	1/2x1/2x1/2 ALUMINUM EGGRATE CORE, C/W 1 1/4" FLAT BORDER & SCREWED FASTENING FOR SURFACE MOUNTING.

GENERAL DIFFUSER/GRILLE NOTES:
 1. ACCEPTABLE MANUFACTURERS: EH PRICE, NAILOR, TITUS, KRUEGER, CARNES, METALAIRE, TUTTLE & BAILEY
 2. GRILLE COLOURS ARE SELECTED BY ARCHITECT FROM STANDARD COLOUR CHART, UNLESS OTHERWISE NOTED.
 3. PAINT INTERIOR OF DUCTWORK BEHIND GRILLE MATT BLACK (WHERE VISIBLE THRU GRILLE).

GREASE INTERCEPTOR SCHEDULE

Item	Type	Flow Rate GPM(LPM)	Grease Capacity lbs (kg)	Acceptable Manufacturer	Notes
GI-1	GREASE INTERCEPTOR	25 (95)	72 (32.6)	ENDURA 3925XTA02	RECESSED UNDER CABINET INSTALLATION, SOLDERED HOMOPOLYMER TYPE POLYPROPYLENE INTERCEPTOR, CAN BE SOLDERED OR THERMOFORMED
GI-2	GREASE INTERCEPTOR	10 (38)	31.9 (14.5)	ENDURA 3910A02	RECESSED UNDER CABINET INSTALLATION, SOLDERED HOMOPOLYMER TYPE POLYPROPYLENE INTERCEPTOR, CAN BE SOLDERED OR THERMOFORMED

GREASE INTERCEPTOR GENERAL NOTES:
 1. ACCEPTABLE MANUFACTURERS: CAN-AQUA, JRC PLASTIC INTERRUPTORS AND PIT BOXES, JONESPEC, CONTOUR, ENDURA
 2. RETENTION TYPE INTERCEPTOR, TESTED AND RATED IN ACCORDANCE WITH THE ENVIRONMENTAL PROTECTION ACT (EPA), COMPLETE WITH FIRE RESISTANT POLYPROPYLENE CONSTRUCTION FOR MOUNTING FLUSH WITH FLOOR WITH ALUMINUM NON-SKID COVERS ON FLOOR COMPLETE WITH FLOW CONTROL FITTING SUITABLY VENTED, AND EXTENSION.
 3. CAPACITY: 3.15 L/S (60 GPM) INLET & OUTLET.
 4. THE UNIT SHALL BE ABLE TO TREAT EFFLUENT TO LESS THAN 100 MG/LITRE OF OIL AND GREASE.
 5. THE GREASE INTERCEPTOR SHALL HAVE A MINIMUM OF FIVE MINUTES RETENTION TIME.

FAN SCHEDULE

CAPACITY INDICATED ON SCHEDULE REFER TO SPECIFICATION FOR CONSTRUCTION STANDARDS, ACCESSORIES AND ADDITIONAL INFORMATION.

Item	Type	Capacity cfm	ESP in wc	Fan Speed rpm	Motor hp	Motor Voltage	Acceptable Manufacturer	Description
EF-1	KITCHEN EXHAUST FAN	600	0.2	1725	1/10	120/1/60	GREENHECK CUE-090	SPUN ALUMINUM MOTOR COVER & FAN SHROUD, UPBLAST, W/BELT DRIVE CENTRIFUGAL BACKWARD INCLINED NON-STICK FAN, GALV BIRD SCREEN, VENTED & INSULATED EXTENDED ROOF CURB, & GREASE TRAP. SUITABLE FOR NFPA-96 INSTALLATION.

GENERAL FAN NOTES:
 1. ACCEPTABLE MANUFACTURERS: GREENHECK, PENN-BARRY, COOK, CARNES, ACME, TWIN CITY, JENCO, BUFFALO.
 2. PROVIDE 24" TALL PREFABRICATED, INSULATED ROOF CURB FOR ALL ROOF MOUNTED FANS.

EXHAUST HOOD SCHEDULE

Item	Description	Type	Dimensions	Exhaust Size	Manufacturer & Model	Description
HOOD-1	NFPA 96 EXHAUST HOOD	DRY GREASE EXTRACTOR	60"(L) x 30"(W)	16" x 16"	HALTON ED	C/W S.S. SHROUD TO CEILING AND DUCT COLLAR, INTEGRAL FIRE SUPPRESSION, REMOTE ON/OFF SWITCH (CONNECTED TO EF-1). PROVIDE LIGHT AS SPECIFIED. PROVIDE HOOD CONTROLLER FOR INTERLOCKING EF-1 AND MUA-1.

PLUMBING FIXTURE SCHEDULE (1 OF 2)

Item	Type	Connection Sizes					Acceptable Manufacturer	Fixture	Fixture Description	Acceptable Manufacturer	Trim	Trim Description	Accessories
		HW	CW	TW	Drain	Vent							
FD-1	FLOOR DRAIN FOR SAFETY SHEET FLOORING				NOTED	1 1/2	ZURN ZN-211-R6 MIFAB CONTOUR WATTS	GENERAL DUTY CAST IRON BODY, ADJUSTABLE STRAINER, NICKEL BRONZE STRAINER, AND CLAMPING COLLAR. USE SQUARE STRAINER IN TILED AREAS AND ROUND STRAINER ELSEWHERE. C/W TRAP PRIMER	DELTA 100 ZURN Z82300-CP8 MOEN COMMERCIAL 8701	FAUCET: CHROME PLATED BRASS, WITH SWING SPOUT, AERATOR, SINGLE LEVER HANDLE, WASHERLESS CONTROLS, ACCESSORIES TO LIMIT MAXIMUM FLOW RATE TO 8.35 l/min (2.2 gpm) AT 413 kPa (60 psi).	WASTE FITTING: INTEGRAL STAINLESS STEEL BASKET STRAINER/STOPPER, TAILPIECE, CAST BRASS P-TRAP WITH CLEANOUT.		

PLUMBING FIXTURE SCHEDULE (2 OF 2)

Item	Type	Connection Sizes					Acceptable Manufacturer	Fixture	Fixture Description	Acceptable Manufacturer	Trim	Trim Description	Accessories
		HW	CW	TW	Drain	Vent							
S-1	STAINLESS STEEL TRIPLE COMPARTMENT SINK	1/2	1/2		1 1/2	1 1/4	FRANKE LBT6410PCB-1 NO ALTERNATIVES	SINK: TRIPLE COMPARTMENT, LEDGE-BACK. FROM 1.0 mm (20 GAUGE) THICK TYPE 302 POLISHED STAINLESS STEEL, SELF-RIMMING, UNDERCOATED, CLAMPS. OVERALL SIZE: 1178 mm X 522 mm X 254 mm (46-3/8" X 20 9/16" X 10"). COMPARTMENT SIZE: 356 mm X 406 mm X 254 mm (14" X 16" X 10")	T&S B-1123-HM4 NO ALTERNATIVES	FAUCET: 8" DECK MOUNTED, CHROME PLATED BRASS BODY, WITH 12" SWING SPOUT, AERATOR, AND 4" WRIST ACTION HANDLES. ACCESSORIES TO LIMIT MAXIMUM FLOW RATE TO 8.35 l/min (2.2 gpm) AT 413 kPa (60 psi).	WASTE FITTING: INTEGRAL STAINLESS STEEL BASKET STRAINER/STOPPER, TAILPIECE, CAST BRASS P-TRAP WITH CLEANOUT.		
S-2	STAINLESS STEEL SINGLE SINK	1/2	1/2		1 1/2	1 1/4	KINDRED LBS6808-1/3 NOVANNI 1017	SINK: SINGLE COMPARTMENT, LEDGE-BACK. FROM 1.0 mm (20 GAUGE) THICK TYPE 302 POLISHED STAINLESS STEEL, SELF-RIMMING, UNDERCOATED, CLAMPS. OVERALL SIZES: 520 mm X 510 mm X 200 mm (20 1/2" X 20" X 8").	DELTA 100 ZURN Z82300-CP8 MOEN COMMERCIAL 8701	FAUCET: CHROME PLATED BRASS, WITH SWING SPOUT, AERATOR, SINGLE LEVER HANDLE, WASHERLESS CONTROLS, ACCESSORIES TO LIMIT MAXIMUM FLOW RATE TO 8.35 l/min (2.2 gpm) AT 413 kPa (60 psi).	WASTE FITTING: INTEGRAL STAINLESS STEEL BASKET STRAINER/STOPPER, TAILPIECE, CAST BRASS P-TRAP WITH CLEANOUT.		
HD-1	HUB DRAIN				NOTED	1 1/2	ZURN Z415 C/W Z-400-S MIFAB F1100-C-DD CONTOUR C2000-F WATTS FD-100-C-DD	GENERAL DUTY HUB DRAIN CAST IRON BODY, CLAMPING COLLAR, NICKEL-BRONZE ADJUSTABLE HEAD HUB, C/W TRAP PRIMER.					

GENERAL NOTES

- A. ALL DRAWINGS ARE TO BE READ IN CONJUNCTION WITH THE PREPARED SPECIFICATION.
- B. SANITARY VENT PIPING IS NOT SHOWN. PROVIDE ALL NECESSARY VENT PIPING FROM ALL FIXTURES FOR A COMPLETE SYSTEM TO ALL LOCAL PLUMBING CODE & LOCAL AUTHORITY REQUIREMENTS, CONNECTED TO EXISTING VENTS OR NEW VENTS AS REQUIRED. CO-ORDINATE VENT LOCATION(S) WITH GENERAL CONTRACTOR. MAINTAIN MIN 14"-0" FROM ANY AIR INLET. INSTALL VENT PIPING HIGH IN JOIST SPACE.
- C. WHERE DUCTWORK PENETRATES CORRIDOR WALL, CENTER DUCT(S) BETWEEN OWSJ.
- D. CO-ORDINATE WITH THE GENERAL CONTRACTOR ANY OWSJ BRIDGING/CROSS BRACING RELOCATION OR REMOVAL/REPLACEMENT REQUIRED FOR INSTALLATION OF DUCTWORK.
- E. CONTRACTOR TO LOCATE ISOLATION VALVES / FREEZE PIPING / OR OTHERWISE DRAIN SYSTEMS TO ALLOW PROPOSED WORK TO PROCEED. REFILL SYSTEMS AS INDICATED.
- F. UPON COMPLETION OF THE PROJECT OR UPON COMPLETION OF EACH INDIVIDUAL PHASE OF THE PROJECT THE CONTRACTORS SHALL PROVIDE THE FOLLOWING CERTIFICATES BEFORE CONFORMANCE LETTERS ARE ISSUED BY THE CONSULTANT:
 - POTABLE WATER TEST (SEE SPEC 1514/22 11 16 PART 3)
 - BACKFLOW TEST CERTIFICATE(S) FOR ALL TESTABLE DEVICES
 - COPY OF MANDATORY TSSA/CSA-B149 GAS PRESSURE TEST TAG
 - NFPA-13 SPRINKLER CONTRACTOR'S MATERIAL & TEST CERTIFICATE
 - FIRE PROTECTION ENGINEER'S INSPECTION/COMFORMANCE LETTER
 - NFPA-96 KITCHEN HOOD FIRE SUPPRESSION SYSTEM TEST
 ALL CERTIFICATES ARE TO BE SUBMITTED TOGETHER IN A SINGLE PACKAGE.

MECHANICAL LEGEND

Item	Description	Item	Description
-----	ITEM TO BE REMOVED	FEC	RECESSED CABINET MOUNTED FIRE EXTINGUISHER
---	CUT EXISTING & CONNECT NEW PIPING	FE	WALL MOUNTED FIRE EXTINGUISHER
→	FLOW DIRECTION	CO	FLOOR CLEANOUT
---	POTABLE COLD WATER	CO	LINE CLEANOUT
---	POTABLE HOT WATER	PRV	PRESSURE REDUCING VALVE
---	POTABLE HOT WATER RECIRC.	G	THERMOSTAT (WITH GUARD WHERE INDICATED)
--SAN-EX--	EXISTING SAN ABOVE FLOOR	→→→→	TURNING VANES
--SAN-EX--	EXISTING SAN BELOW FLOOR	⊠	SUPPLY AIR DUCT
--SAN--	SANITARY ABOVE FLOOR	⊠	RETURN/EXHAUST AIR DUCT
--SAN--	SANITARY BELOW FLOOR	⊠	ACOUSTIC DUCT LINING
STM-EX	EXISTING STM ABOVE FLOOR	⊠	THERMAL INSULATION
STM-EX	EXISTING STM BELOW FLOOR	⊠	BRANCH LINE SPIN-IN COLLAR C/W BALANCING DAMPER
-STM-	STORM ABOVE FLOOR	⊠	TRUNK MAIN BRANCH COLLAR C/W BALANCING DAMPER
-STM-	STORM BELOW FLOOR	BD	BALANCING DAMPER
---CD---	CONDENSATE DRAIN	⊠	MOTORIZED DAMPER
--V--	VENT	FD	FIRE DAMPER
FD	FLOOR DRAIN	FSD	FIRE/SMOKE DAMPER
---	TRAP PRIMER	FSD	SMOKE DAMPER
---	TEE CONNECTION	FF	FIRE FLAP
c---	PIPE DOWN	⊠	RECTANGULAR DUCTWORK
o---	PIPE UP	⊠	RIGID ROUND DUCT
---	SCREWED OR WELDED PIPE CAP	---	FLEXIBLE ROUND DUCT
⊠	PLUG VALVE	---A---	ACOUSTICAL, FLEXIBLE ROUND DUCT
⊠	BALL VALVE	---AL---	ALUMINUM DUCT
⊠	SOLENOID VALVE	---SS---	STAINLESS STEEL DUCT
←	VALVE ON RISER	⊠	DIFFUSER/GRILLE SIZE (imp), TYPE & CAPACITY (cfm)
⊠	BALANCING VALVE	BV	



51 Kingston Street
 Goderich, ON N7A 3K3
 T 519 524 5313
 F 519 524 5253
 www.AllanAvisArchitects.com

The contractor shall verify all dimensions and report all errors and discrepancies to the Consultant before commencement of the work.
 The drawings show general arrangement of services. Follow as closely as actual building construction will permit. Obtain approval for relocation of service from Consultant before commencement of the work.
 The drawings do not indicate all offsets fitting and accessories which may be required. Provide the same to meet the required conditions.
 Drawings and specifications, etc., prepared and issued by the consultant are the property of the consultant and must be returned at the completion of the project. These documents are not to be duplicated or copied without the consent of the Consultant.
 Do not scale this drawing.
 © 2024 DEI Consulting Engineers Inc.



55 Northland Road, Waterloo, ON N2V 1Y8
 Phone: 519-735-3555
 Website: deiassociates.ca
 Project Number: 24061

Rev No.	DATE	REMARKS
5	2024-08-22	ISSUED FOR ADDENDUM #2
4	2024-08-09	ISSUED FOR ADDENDUM #1
3	2024-07-17	ISSUED FOR TENDER & PERMIT
2	2024-06-25	ISSUED FOR 90% REVIEW
1	2024-05-23	ISSUED FOR 50% REVIEW

ISSUED FOR

KEY PLAN

**ARTHUR ARENA
 INTERIOR
 RENOVATIONS
 158 DOMVILLE ST.
 ARTHUR, ONTARIO
 MECHANICAL
 LEGENDS, NOTES,
 AND SCHEDULES**

drawn : CSP	check : AD
date : 05/24/24	sheet : M1.1
job : 24061	



51 Kingston Street
Goderich, ON N7A 3K3
www.AllanAvisArchitects.com

T 519 524 5313
F 519 524 5253

The contractor shall verify all dimensions and report all errors and discrepancies to the Consultant before commencement of the work.
The drawings show general arrangement of services. Follow as closely as actual building construction will permit. Obtain approval for relocation of service from Consultant before commencement of the work.
The drawings do not indicate all offsets fitting and accessories which may be required. Provide the same to meet the required conditions.
Drawings and specifications, etc., prepared and issued by the consultant are the property of the consultant and must be returned at the completion of the project. These documents are not to be duplicated or copied without the consent of the Consultant.
Do not scale this drawing.
© 2024 DEI Consulting Engineers Inc.

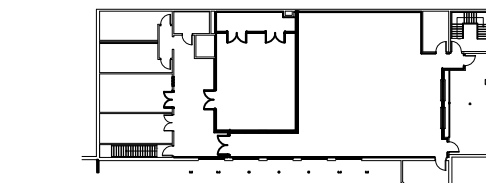


DEI
Consulting Engineers
MECHANICAL | ELECTRICAL | AQUATIC

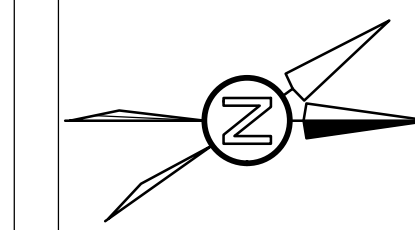
55 Northland Road, Waterloo, ON N2V 1Y8
Phone: 519-735-3555
Website: deiassociates.ca
Project Number: 24061

Rev.No.	DATE	REMARKS
5	2024-08-22	ISSUED FOR ADDENDUM #2
4	2024-08-09	ISSUED FOR ADDENDUM #1
3	2024-07-17	ISSUED FOR TENDER & PERMIT
2	2024-06-25	ISSUED FOR 90% REVIEW
1	2024-05-23	ISSUED FOR 50% REVIEW

ISSUED FOR



KEY PLAN



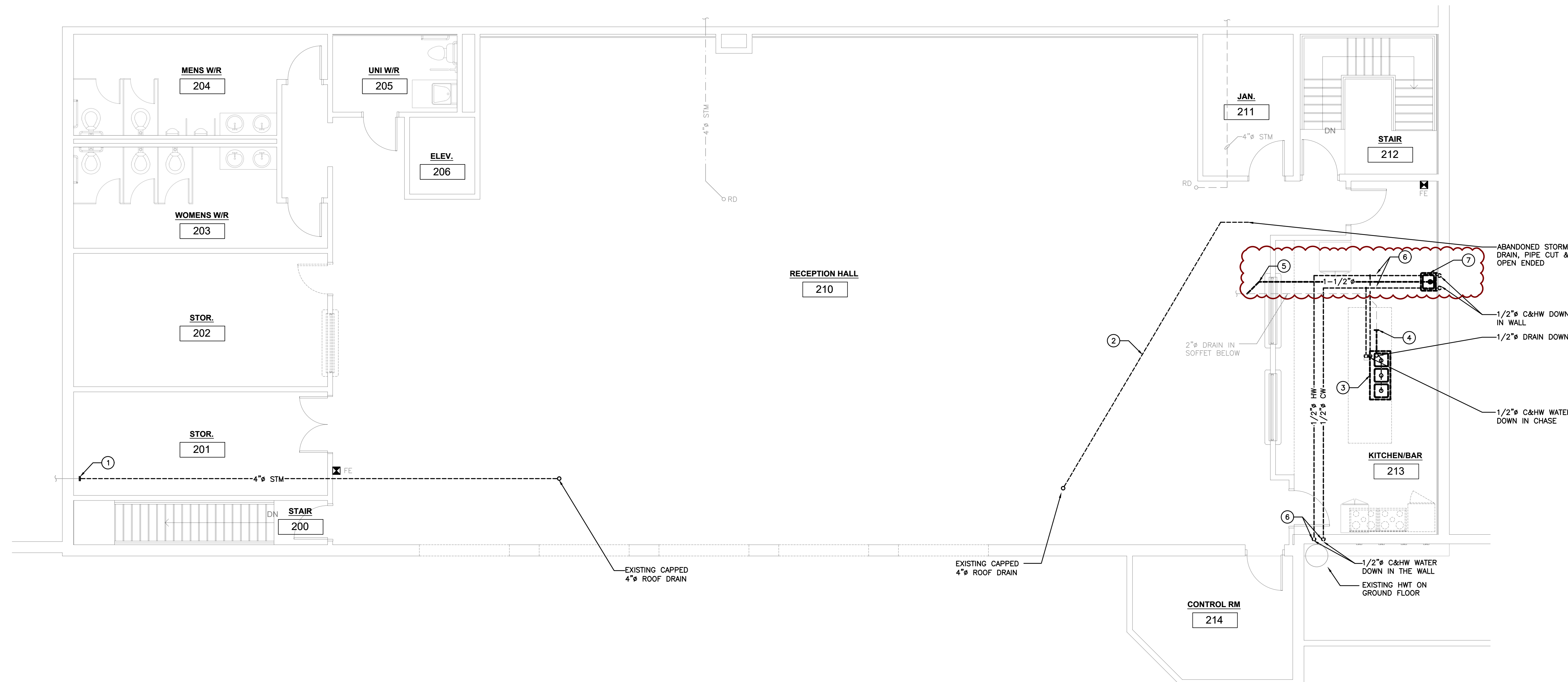
ARTHUR ARENA
INTERIOR
RENOVATIONS
158 DOMVILLE ST.
ARTHUR, ONTARIO
DEMOLITION PLAN -
PLUMBING AND
DRAINAGE

SPECIFIC DEMOLITION NOTES

- CUT AND CAP PORTION OF ACCESSIBLE ABANDONED STORM DRAINAGE PIPE. REMOVE BEYOND COMPLETE.
- REMOVE EXISTING ABANDONED STORM PIPING.
- EXISTING SINK TO BE REMOVED COMPLETE. CUT EXISTING WATER CONNECTION AND PREPARE FOR NEW SINK INSTALLATION.
- CUT EXISTING SANITARY LINE AND REMOVE VERTICAL PIPING. PREPARE FOR NEW CONNECTION. CO-ORDINATE WITH ARCHITECTURAL TRADE TO SAWCUT FLOOR AS REQUIRED FOR INSTALLATION OF NEW DRAINS BELOW SLAB.
- REMOVE EXISTING 1-1/2" DRAIN FROM HANDWASH SINK BACK TO POINT OF CONNECTION TO SANITARY MAIN.
- REMOVE EXISTING 1/2" C&HW BACK TO HWT.
- EXISTING HANDWASH SINK TO BE REMOVED COMPLETE.

GENERAL DEMOLITION NOTES

- EXISTING MECHANICAL ITEMS NOT SHOWN SHALL REMAIN UNLESS NOTED OTHERWISE.
- EXISTING MECHANICAL ITEMS SHOWN BUT NOT NOTED AS BEING REMOVED OR RENOVATED SHALL REMAIN AS PRESENTLY INSTALLED AND OPERATING.
- THIS CONTRACTOR SHALL BE RESPONSIBLE FOR VERIFYING ON SITE ALL LOCATIONS AND SIZES OF ALL SERVICES & EQUIPMENT PRIOR TO THE COMMENCEMENT OF WORK.
- ALL OPENINGS THAT RESULT FROM THE REMOVAL OF EQUIPMENT OR SERVICES SHALL BE NEATLY PATCHED WITH SUITABLE NEW MATERIALS TO SUIT EXISTING CONSTRUCTION.
- PLUMBING VENTS ARE NOT INDICATED OR IDENTIFIED. REMOVE ALL REDUNDANT VENTS WHILE MAINTAINING INTEGRITY OF EXISTING SYSTEMS TO REMAIN.
- REMOVAL OF EXISTING PIPING, OR DUCT SYSTEMS INCLUDES REMOVAL OF ALL HANGERS, INSULATION, FITTINGS, ETC.
- MAINTAIN INTEGRITY OF EXISTING SYSTEMS THAT ARE TO REMAIN OR BE MODIFIED.
- INSTALL NEW SYSTEM OR SERVICES WHERE REQUIRED TO MAINTAIN SYSTEM OPERATION PRIOR TO DEMOLITION OF EXISTING SERVICES.
- THIS CONTRACTOR IS TO REMOVE & REPLACE CEILING AS REQUIRED FOR REMOVAL/REPLACEMENT OF SERVICES.



SECOND FLOOR DEMOLITION PLAN – PLUMBING AND DRAINAGE
SCALE: 3/16"=1'-0"

drawn :	CSP	check :	AD
date :	05/24/24	sheet :	M2.1
job :	24061		



51 Kingston Street
Goderich, ON N7A 3K3
www.AllanAvisArchitects.com

T 519 524 5313
F 519 524 5253

GENERAL RENOVATION NOTES

- A. CO-ORDINATE MOUNTING HEIGHTS OF FIXTURES WITH MILLWORK AND ARCHITECTURAL DETAILS.
- B. SANITARY VENT PIPING IS NOT SHOWN. PROVIDE ALL NECESSARY VENT PIPING FROM ALL FIXTURES FOR A COMPLETE SYSTEM TO ALL LOCAL PLUMBING CODE & LOCAL AUTHORITY REQUIREMENTS, CONNECTED TO EXISTING VENTS OR NEW VENTS AS REQUIRED.
- C. FLOOR DRAINS ARE TO BE VENTED AND TRAP SEAL PRIMED PROVIDE AUTOMATIC TRAP SEAL PRIMERS, MANIFOLDS, AND ASSOCIATED PIPING AS REQUIRED.
- D. EXTEND CLEANOUTS UP THROUGH FLOOR.
- E. REFER TO PLUMBING SCHEDULE FOR ALL FIXTURE BRANCH SIZING.

SPECIFIC RENOVATION NOTES

- 1. CONNECT NEW SINK TO C&HW BRANCH C/W ISOLATION VALVES ON EACH LINE.
- 2. INSTALL GREASE INTERCEPTOR UNDER CABINTRY.
- 3. 2" SAN DRAIN DOWN FROM GREASE INTERCEPTOR INTO SOFFIT BELOW.
- 4. RECONNECT NEW 2" SAN TO EXISTING DRAIN LINE.
- 5. HUB DRAIN MOUNTED ABOVE THE FLOOR.
- 6. NOT USED.

The contractor shall verify all dimensions and report all errors and discrepancies to the Consultant before commencement of the work.
The drawings show general arrangement of services. Follow as closely as actual building construction will permit. Obtain approval for relocation of service from Consultant before commencement of the work.
The drawings do not indicate all offsets fitting and accessories which may be required. Provide the same to meet the required conditions.
Drawings and specifications, etc., prepared and issued by the consultant are the property of the consultant and must be returned at the completion of the project. These documents are not to be duplicated or copied without the consent of the Consultant.
Do not scale this drawing.
© 2024 DEI Consulting Engineers Inc.

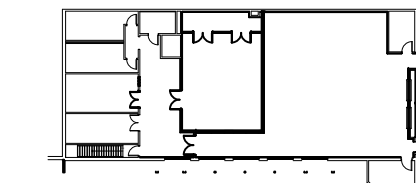


MECHANICAL | ELECTRICAL | AQUATIC

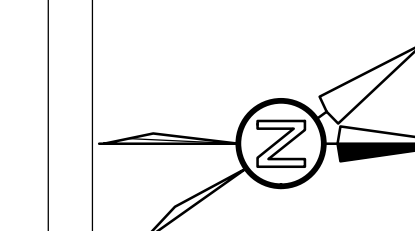
55 Northland Road, Waterloo, ON N2V 1Y8
Phone: 519-735-3555
Website: deiassociates.ca
Project Number: 24061

Rev.No.	DATE	REMARKS
5	2024-08-22	ISSUED FOR ADDENDUM #2
4	2024-08-09	ISSUED FOR ADDENDUM #1
3	2024-07-17	ISSUED FOR TENDER & PERMIT
2	2024-06-25	ISSUED FOR 90% REVIEW
1	2024-05-23	ISSUED FOR 50% REVIEW

ISSUED FOR

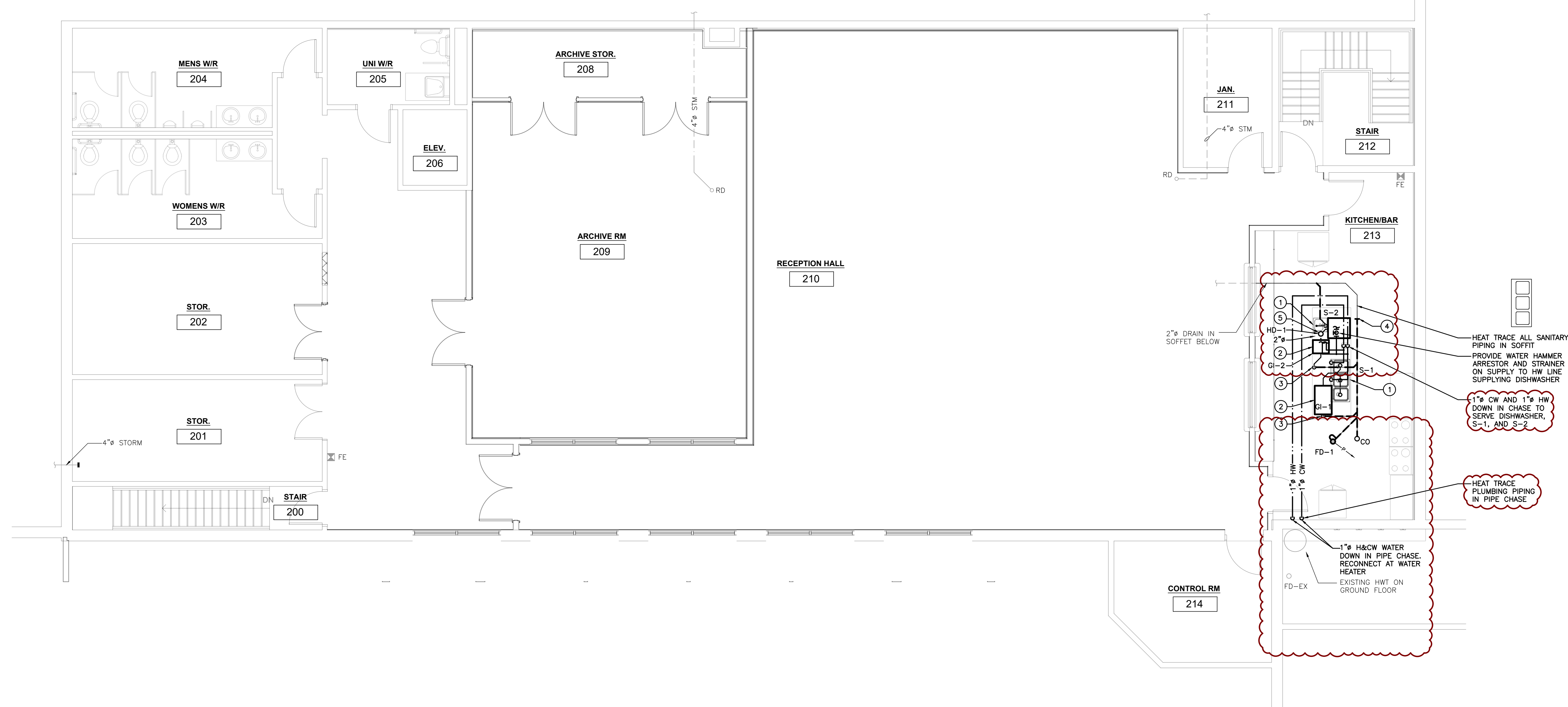


KEY PLAN



**ARTHUR ARENA
INTERIOR
RENOVATIONS
158 DOMVILLE ST.
ARTHUR, ONTARIO
RENOVATION PLAN -
PLUMBING AND
DRAINAGE**

drawn : CSP	check : AD
date : 05/24/24	sheet : M3.1
job : 24061	



SECOND FLOOR RENOVATION PLAN – PLUMBING AND DRAINAGE
SCALE: 3/16"=1'-0"

GENERAL RENOVATION NOTES

- A. REFER TO ARCHITECTURAL CEILING PLANS FOR GRILLE/DIFFUSER LOCATIONS. CO-ORDINATE FINAL LOCATION ON SITE.
- B. WHERE DUCTWORK PENETRATES A CORRIDOR WALL, CENTER DUCTS BETWEEN OWSJ.

SPECIFIC RENOVATION NOTES

- 1. EXTEND EXISTING RETURN DUCT AS REQUIRED TO CONNECT NEW BYPASS DUCTWORK. BOTTOM OF DUCTWORK TO REMAIN OPEN.
- 2. NEW DIFFUSER CONNECTED TO EXISTING FLEX DUCT. STRETCH FLEX DUCT AS NEEDED TO SUIT LOCATION.



51 Kingston Street
Goderich, ON N7A 3K3
T 519 524 5313
F 519 524 5253
www.AllanAvisArchitects.com

The contractor shall verify all dimensions and report all errors and discrepancies to the Consultant before commencement of the work.
The drawings show general arrangement of services. Follow as closely as actual building construction will permit. Obtain approval for relocation of service from Consultant before commencement of the work.
The drawings do not indicate all offsets fitting and accessories which may be required. Provide the same to meet the required conditions.
Drawings and specifications, etc., prepared and issued by the consultant are the property of the consultant and must be returned at the completion of the project. These documents are not to be duplicated or copied without the consent of the Consultant.
Do not scale this drawing.
© 2024 DEI Consulting Engineers Inc.

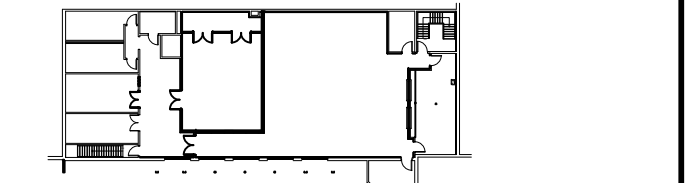


Consulting Engineers
MECHANICAL | ELECTRICAL | AQUATIC

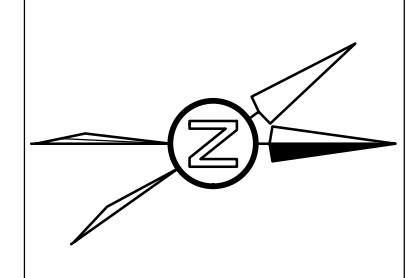
55 Northland Road, Waterloo, ON N2V 1Y8
Phone: 519-735-3555
Website: deiconsultants.ca
Project Number: 24061

Rev.No.	DATE	REMARKS
5	2024-08-22	ISSUED FOR ADDENDUM #2
4	2024-08-09	ISSUED FOR ADDENDUM #1
3	2024-07-17	ISSUED FOR TENDER & PERMIT
2	2024-06-25	ISSUED FOR 90% REVIEW
1	2024-05-23	ISSUED FOR 50% REVIEW

ISSUED FOR

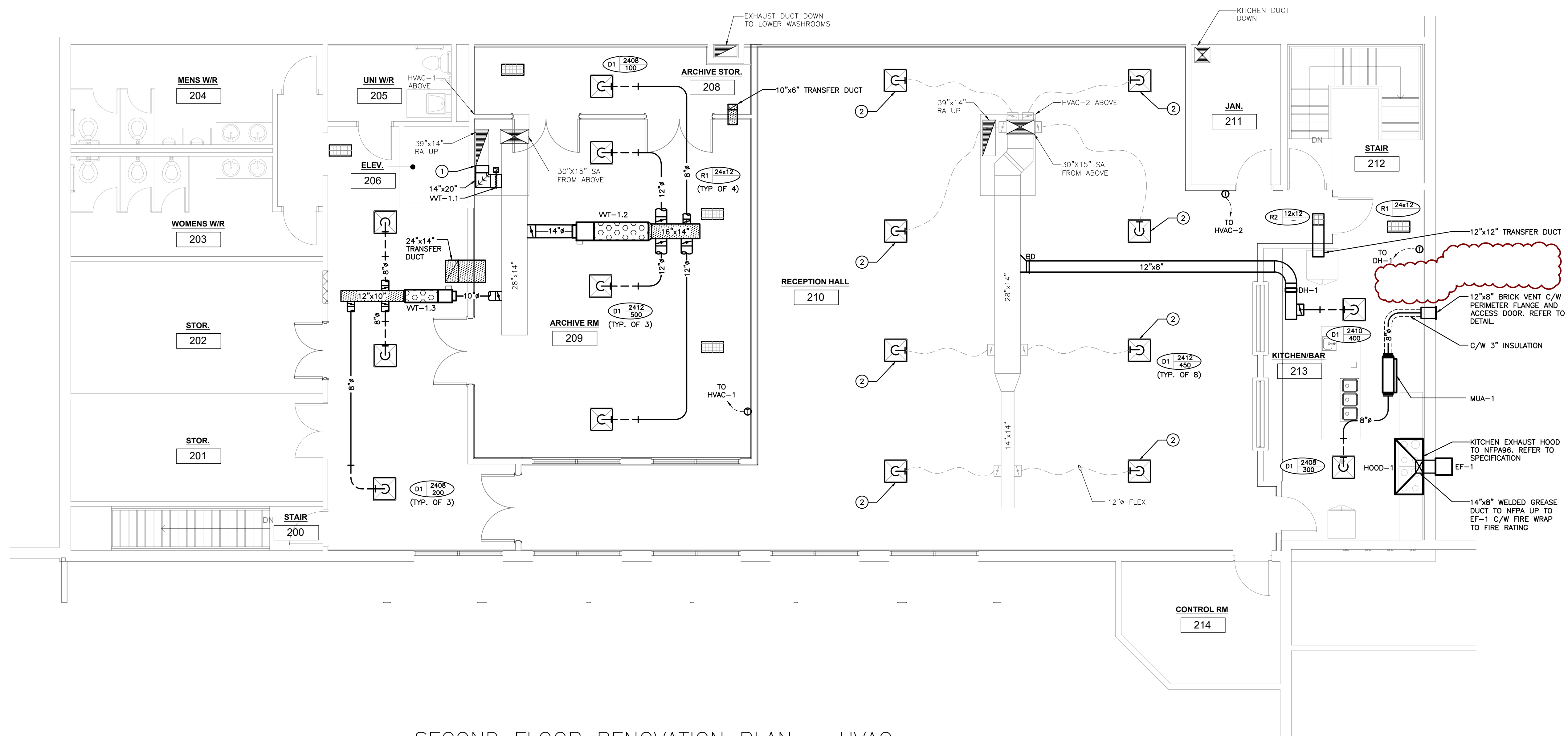


KEY PLAN

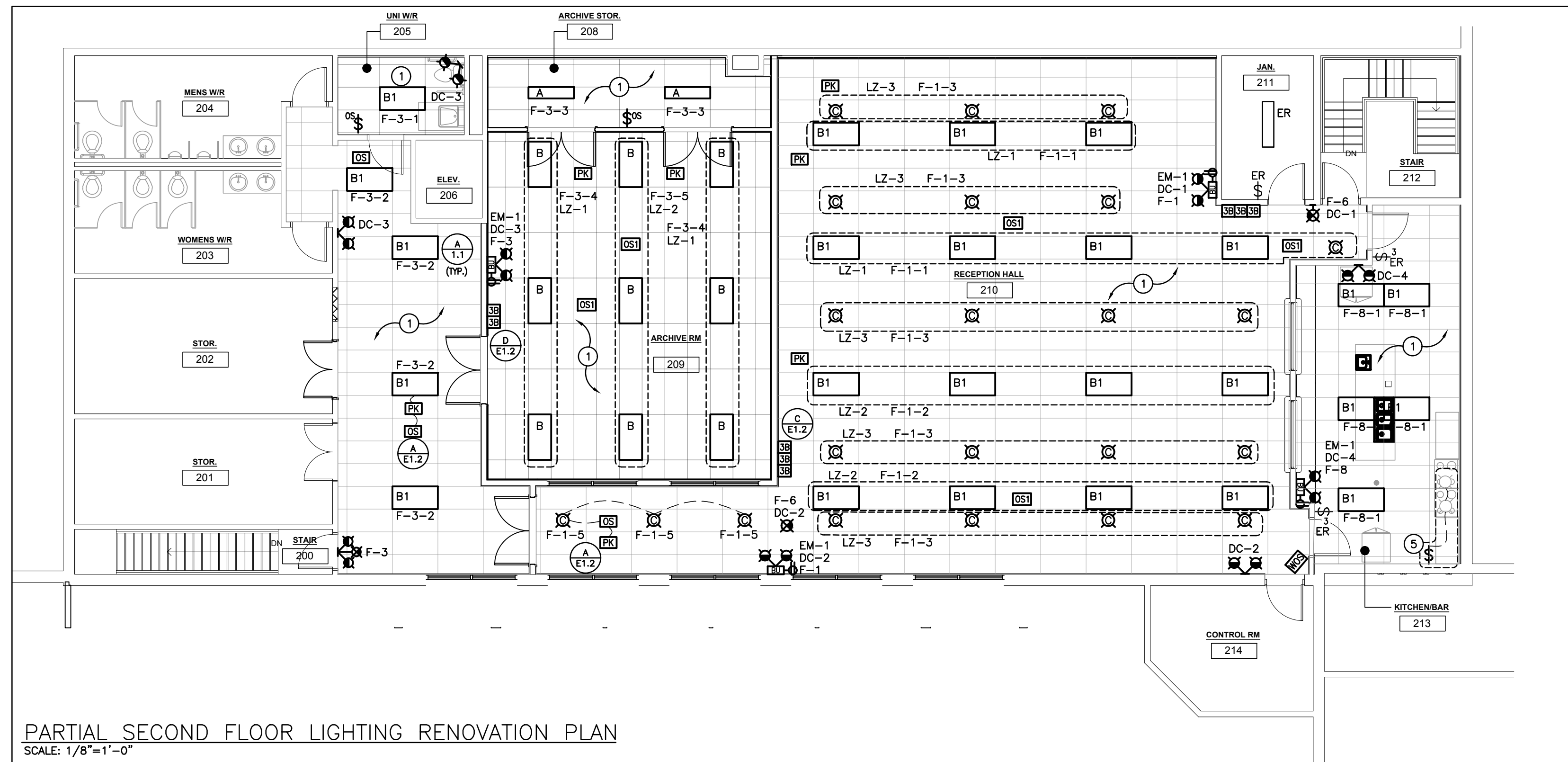


**ARTHUR ARENA
INTERIOR
RENOVATIONS
158 DOMVILLE ST.
ARTHUR, ONTARIO
RENOVATION PLAN -
HVAC**

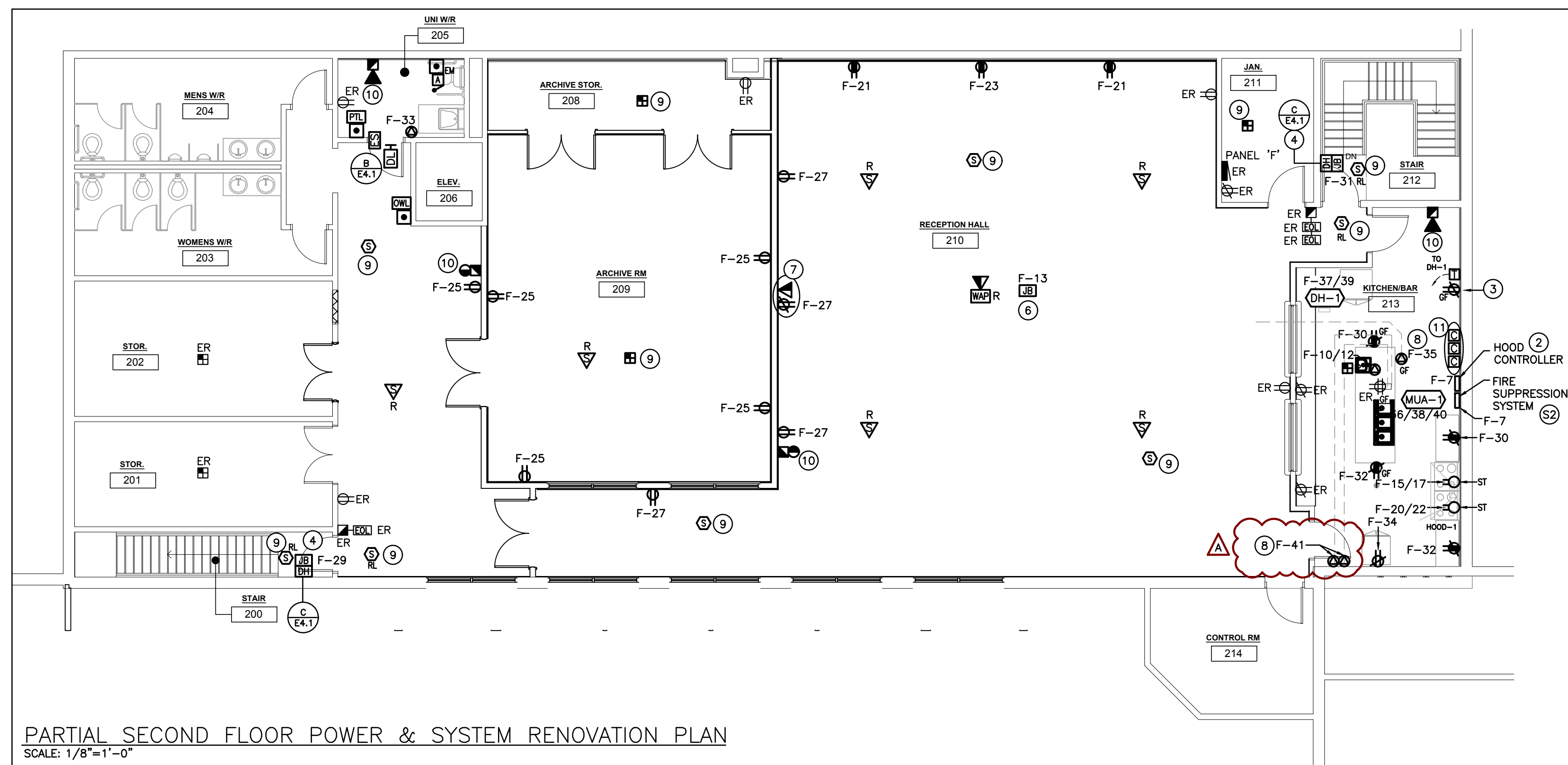
drawn : CSP	check : AD
date : 05/24/24	sheet : M3.2
job : 24061	



SECOND FLOOR RENOVATION PLAN – HVAC
SCALE: 3/16"=1'-0"



PARTIAL SECOND FLOOR LIGHTING RENOVATION PLAN
SCALE: 1/8"=1'-0"



PARTIAL SECOND FLOOR POWER & SYSTEM RENOVATION PLAN
SCALE: 1/8"=1'-0"

GENERAL NOTES

- 'ER' INDICATES EXISTING ITEM TO REMAIN.
- 'R' INDICATES EXISTING ITEM IN RELOCATED POSITION.
- ALL DEVICES SHOWN ARE NEW UNLESS OTHERWISE NOTED.
- EXISTING ELECTRICAL EQUIPMENT NOT SHOWN SHALL REMAIN UNLESS OTHERWISE NOTED.
- MAINTAIN SERVICE TO ALL EXISTING DEVICES TO REMAIN.
- REVISE PANEL DIRECTORIES TO SUIT CHANGES (TYPED).

SPECIFIC RENOVATION NOTES

- 1 INDICATES WITHIN NOTED AREA CONNECT NEW LIGHTING FIXTURE TO EXISTING CIRCUIT MADE AVAILABLE DURING DEMOLITION. NOTED CIRCUIT NUMBER ARE FOR REFERENCE ONLY.
- 2 INDICATES HOOD CONTROLLER FOR INTERLOCKING OF MAKE UP AIR UNIT AND ROOF EXH. FAN EF-1. COORDINATE LOCATION WITH HOOD SUPPLIER AND MECHANICAL CONTRACTOR.
- 3 INDICATES CONNECT NEW RECEPTACLE TO EXISTING CIRCUIT MADE AVAILABLE DURING DEMOLITION.
- 4 PROVIDE 120V HARDWIRED CONNECTION C/W JUNCTION BOX AND STEP DOWN TRANSFORMER (120V/24V) ABOVE ACCESSIBLE CEILING SPACE TO SERVE THE MAGNETIC DOOR HOLD OPEN DEVICES. REFER TO DETAIL C/E4.1 AND TO SPECIFICATIONS FOR FURTHER DETAILS AND REQUIREMENTS.
- 5 INDICATES LIGHTING INTEGRATED IN NFPA HOOD. COORDINATE INSTALLATION REQUIREMENTS AND SWITCH LOCATION WITH SHOP DRAWINGS PRIOR TO INSTALLATION. HOOD LIGHTING TO BE WIRED TO LOCAL INTEGRAL TO HOOD. CONNECT TO CIRCUIT F-9.
- 6 INDICATES PROVIDE JUNCTION BOX UP IN CEILING SPACE FOR VAV CONTROLLER.
- 7 INDICATES DEVICES FOR OWNER'S TV. DEVICES SHALL BE MOUNTED IN 2-GANG BACK BOX EQUAL TO EVOLUTION SERIES WALL BOX MODEL #EFSB2. MOUNTING HEIGHT TO BE COORDINATED ON SITE. PRIOR TO ROUGH-IN. PROVIDE A 1-1/4"E.C. W/ PULL ROPE TO ACCESSIBLE CEILING SPACE FOR FUTURE AV WIRING.
- 8 INDICATES THIS CONTRACTOR TO SUPPLY AND INSTALL POWER FOR HEAT TRACING. COORDINATE WORK WITH MECHANICAL CONTRACTOR.
- 9 INDICATES NEW FIRE ALARM DETECTOR CONNECTED TO NEW ADDRESSABLE LOOP AND CROSS ZONED WITH EXISTING LOCAL FLOOR ZONE. REFER TO FIRE ALARM RISER DIAGRAM AND ZONE SCHEDULE.
- 10 INDICATES NEW FIRE ALARM SIGNAL DEVICE CONNECTED TO NEW SIGNAL CIRCUIT. REFER TO FIRE ALARM RISER DIAGRAM AND ZONE SCHEDULE.
- 11 INDICATES TWO (2) NEW 240V 40A-2P AND ONE (1) 240V 20A-1P CONTACTORS C/W H-O-A AND PILOT LIGHT IN ACCESSIBLE CEILING SPACE FOR SHUTDOWN OF NOTED ELECTRICAL LOADS BENEATH SUPPRESSION SYSTEM HOOD PER NOTE #S2. CIRCUITS F-15/17, F-20/22, AND F-32 RESPECTIVELY.

SUPPRESSION SYSTEM NOTES

- S1 PROVIDE 120V UNSWITCHED POWER FROM CIRCUIT AS NOTED FOR SUPPRESSION SYSTEM.
- S2 PROVIDE CONTROL WIRING FROM SUPPRESSION SYSTEM SUCH THAT IN A FIRE CONDITION, SYSTEM MUST SHUT OFF ALL POWER AND/OR FUEL TO ALL APPLIANCES BELOW EXHAUST HOOD. REFER TO KITCHEN EQUIPMENT SCHEDULE. PROVIDE MULTI-POLE CONTACTORS TO SUIT QUANTITY OF BRANCH CIRCUITS FOR ITEMS BEING SHUTDOWN. CONNECT TO FIRE ALARM SYSTEM.
- S3 PROVIDE INTERCONNECT FOR SHUTDOWN OF KITCHEN MAKEUP AIR UNIT.



51 Kingston Street
Goderich, ON N7A 3K3
T 519 524 5313
F 519 524 5253
www.AllanAvisArchitects.com

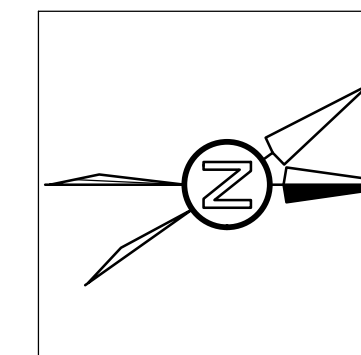
The contractor shall verify all dimensions and report all errors and discrepancies to the Consultant before commencement of the work.
The drawings show general arrangement of services. Follow as closely as actual building construction will permit. Obtain approval for relocation of service from Consultant before commencement of the work.
The drawings do not indicate all offsets fitting and accessories which may be required. Provide the same to meet the required conditions.
Drawings and specifications, etc., prepared and issued by the consultant are the property of the consultant and must be returned at the completion of the project. These documents are not to be duplicated or copied without the consent of the Consultant.
Do not scale this drawing.
© 2024 DEI Consulting Engineers Inc.



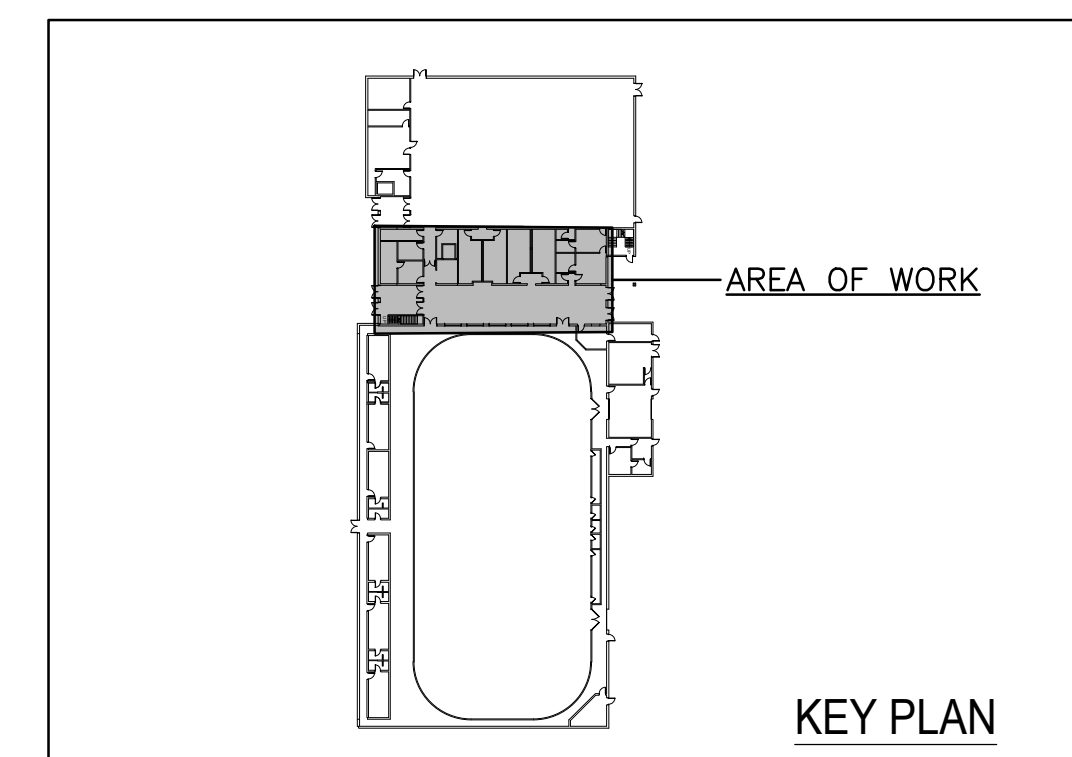
55 Northland Road, Waterloo, ON N2V 1Y8
Phone: 519-735-3555
Website: deiconsultants.ca
Project Number: 24061

Rev.No.	DATE	REMARKS
A	2024-08-21	RE-ISSUED FOR ADDENDUM 02
3	2024-07-17	ISSUED FOR TENDER & PERMIT
2	2024-06-25	ISSUED FOR 90% REVIEW
1	2024-05-23	ISSUED FOR 50% REVIEW

ISSUED FOR



ARTHUR ARENA
INTERIOR
RENOVATIONS
158 DOMVILLE ST.
ARTHUR, ONTARIO
PARTIAL SECOND
FLOOR RENOVATION
PLAN



drawn :	SB	check :	RV
date :	05/24/24	sheet :	E2.2
job :	24061		



GENERAL NOTES

- 'ER' DENOTES EXISTING ITEM TO REMAIN.
- EXISTING ELECTRICAL EQUIPMENT NOT SHOWN SHALL REMAIN UNLESS NOTED OTHERWISE.

SPECIFIC NOTES

- 1 INDICATES NEW EXHAUST FAN 'EF-1' TO BE FED FROM PANEL 'F'.

EXISTING PANEL 'F' SCHEDULE

VOLTAGE: 120/208 VOLTS
 PHASE: 3P, 4W
 MAINS: 225A
 NEUTRAL BUS: FULL
 MOUNTING: SURFACE
 NOTES: FEDERAL PIONEER TYPE 'NBLP'

RW	HALL LIGHTS	15A	1	2	15A	EXISTING LOAD	ER
RW	HALL LIGHTS	15A	3	4	15A	EXISTING LOAD	ER
RW	HALL LIGHTS	15A	5	6	15A	EXIT LIGHTS	ER
RW	HALL LIGHTS	15A	7	8	15A	KITCHEN LIGHTS	ER
RW	POT LIGHTS	15A	9	10	15A	CENTER COUNTER REC.	D
RW	POT LIGHTS	15A	11	12	2P		
RW	EXHAUST FANS	15A	13	14	15A	KITCHEN RECEPTACLE	ER
RW	ELECTRIC STOVE	40A	15	16	15A	EXHAUST FAN AND COOLER	ER
RW		2P	17	18	15A	FRIDGE	ER
ER	EXISTING LOAD	20A	19	20	40A	ELECTRIC STOVE	RW
	SPACE		21	22	2P		
	SPACE		23	24	15A	KITCHEN RECEPTACLE	ER
	SPACE		25	26	15A	REC. IN HALL AT SERVICE C.	ER
	SPACE		27	28	15A	NEW W/R. LTG./FAN	ER
	SPACE		29	30		SPACE	ER
	SPACE		31	32		SPACE	
	SPACE		33	34		SPACE	
	SPACE		35	36		SPACE	
	SPACE		37	38		SPACE	
	SPACE		39	40		SPACE	
	SPACE		41	42		SPACE	

PROPOSED PANEL 'F' SCHEDULE

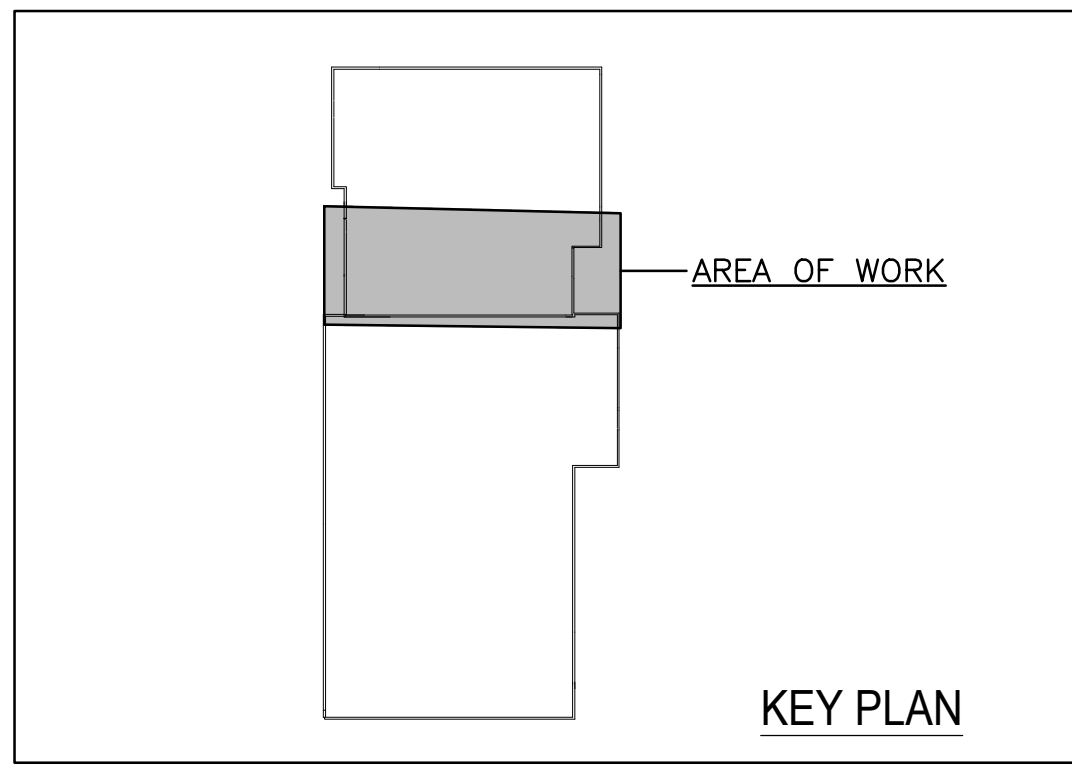
AT THE COMPLETION OF THE PROJECT, PROVIDE A NEW TYPE WRITTEN PANEL DIRECTORY AND INCLUDE A COPY IN THE MAINTENANCE MANUALS

RW	RECEPTION HALL LIGHTS	15A	1	2	15A	EXISTING LOAD	ER
RW	CORRIDOR & ARCHIVE LIGHTS	15A	3	4	15A	EXISTING LOAD	ER
RW	HALL LIGHTS	15A	5	6	15A	EXIT LIGHTS	ER
RW	FIRE SUPPRESSION SYSTEM	15A	7	8	15A	KITCHEN LIGHTS	ER
RW	EXHAUST HOOD & LIGHTS	15A	9	10	30A	KITCHEN '213' DISHWASHER	NB
SP	EXHAUST FAN EF-1	15A	11	12	2P		
RW	VAV CONTROLLER	15A	13	14	15A	KITCHEN RECEPTACLE	ER
RW	KITCHEN '213' ELECTRIC STV.	40A	15	16	15A	EXHAUST FAN AND COOLER	ER
		2P	17	18	15A	FRIDGE	ER
ER	EXISTING LOAD	20A	19	20	40A	KITCHEN '213' ELECTRIC STV.	RW
NB	RECEPTION HALL '210' REC.	20A	21	22	2P		
NB	RECEPTION HALL '210' REC.	20A	23	24	15A	KITCHEN RECEPTACLE	ER
NB	CORRIDOR RECEPTACLE	15A	25	26	15A	REC. IN HALL AT SERVICE C.	ER
NB	RECEPTION HALL '210' REC.	15A	27	28	15A	NEW W/R. LTG./FAN	ER
NB	NORTH STAIRS DOOR HOLDER	15A	29	30	20A	KITCHEN GFI T-SLOT RECEPT.	NB
NB	SOUTH STAIRS DOOR HOLDER	15A	31	32	20A	KITCHEN GFI T-SLOT RECEPT.	NB
NB	UNI. W/R. DOOR OPERATOR	15A	33	34	15A	KITCHEN COOLER RECEPT.	NB
NB	*HEAT TRACE	15A	35	36	20A	MINI INLINE MUA (MUA-1)	NB
NB	ELEC. DUCT HEATER	25A	37	38			
		2P	39	40	3P		
NB	*HEAT TRACE FOR HOT & CW	15A	41	42		SPACE	

DESIGNATION
 'ER' INDICATES EXISTING SERVICE AND BREAKER THAT SHOULD REMAIN UNTOUCHED.
 'SP' INDICATES EXISTING BREAKER THAT MAY BECOME SPARE DUE TO DEMOLITION. (CONFIRM ON SITE)
 'RW' INDICATES EXISTING BREAKER THAT SHOULD BE REWIRED TO SERVICE DEVICES INDICATED ON PLAN
 'NB' INDICATES NEW BREAKER AND WIRING TO SERVICE INDICATED. PROVIDE MOUNTING HARDWARE AS REQUIRED.
 'D' INDICATES EXISTING BREAKER TO BE REMOVED COMPLETE. PROVIDE FILLER PLATES AS REQUIRED.

NOTES: THIS CONTRACTOR IS TO INVESTIGATE BREAKERS AND REVISE PANEL SCHEDULES TO SUIT RENOVATION, NOTING ANY BREAKERS THAT BECOME SPARE DUE TO DEMOLITION. THIS CONTRACTOR IS ALSO TO NOTIFY THE CONSULTANT OF ANY BREAKERS THAT ARE INDICATED TO BE DEMOLISHED OR REUSED, BUT WHICH ARE IN USE BY OTHER DEVICES OR SERVICES.

(*) INDICATES 33mA GROUND FAULT STYLE BREAKER



51 Kingston Street
 Goderich, ON N7A 3K3
 T 519 524 5313
 F 519 524 5253
 www.AllanAvisArchitects.com

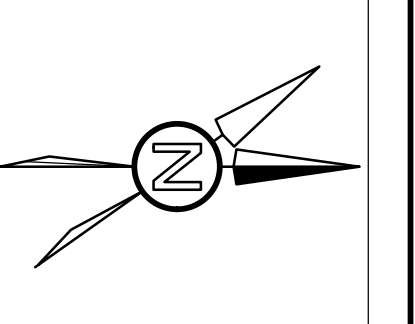
The contractor shall verify all dimensions and report all errors and discrepancies to the Consultant before commencement of the work.
 The drawings show general arrangement of services. Follow as closely as actual building construction will permit. Obtain approval for relocation of service from Consultant before commencement of the work.
 The drawings do not indicate all offsets fitting and accessories which may be required. Provide the same to meet the required conditions.
 Drawings and specifications, etc., prepared and issued by the consultant are the property of the consultant and must be returned at the completion of the project. These documents are not to be duplicated or copied without the consent of the Consultant.
 Do not scale this drawing.
 © 2024 DEI Consulting Engineers Inc.



55 Northland Road, Waterloo, ON N2V 1Y8
 Phone: 519-735-3555
 Website: deiassociates.ca
 Project Number: 24061

Rev.No.	DATE	REMARKS
A	2024-08-21	RE-ISSUED FOR ADDENDUM 02
3	2024-07-17	ISSUED FOR TENDER & PERMIT
2	2024-06-25	ISSUED FOR 90% REVIEW
1	2024-05-23	ISSUED FOR 50% REVIEW

ISSUED FOR



**ARTHUR ARENA
 INTERIOR
 RENOVATIONS
 158 DOMVILLE ST.
 ARTHUR, ONTARIO
 PARTIAL ROOF PLAN
 AND PANEL
 SCHEDULE**

drawn : SB	check : RV
date : 05/24/24	sheet : E2.3
job : 24061	