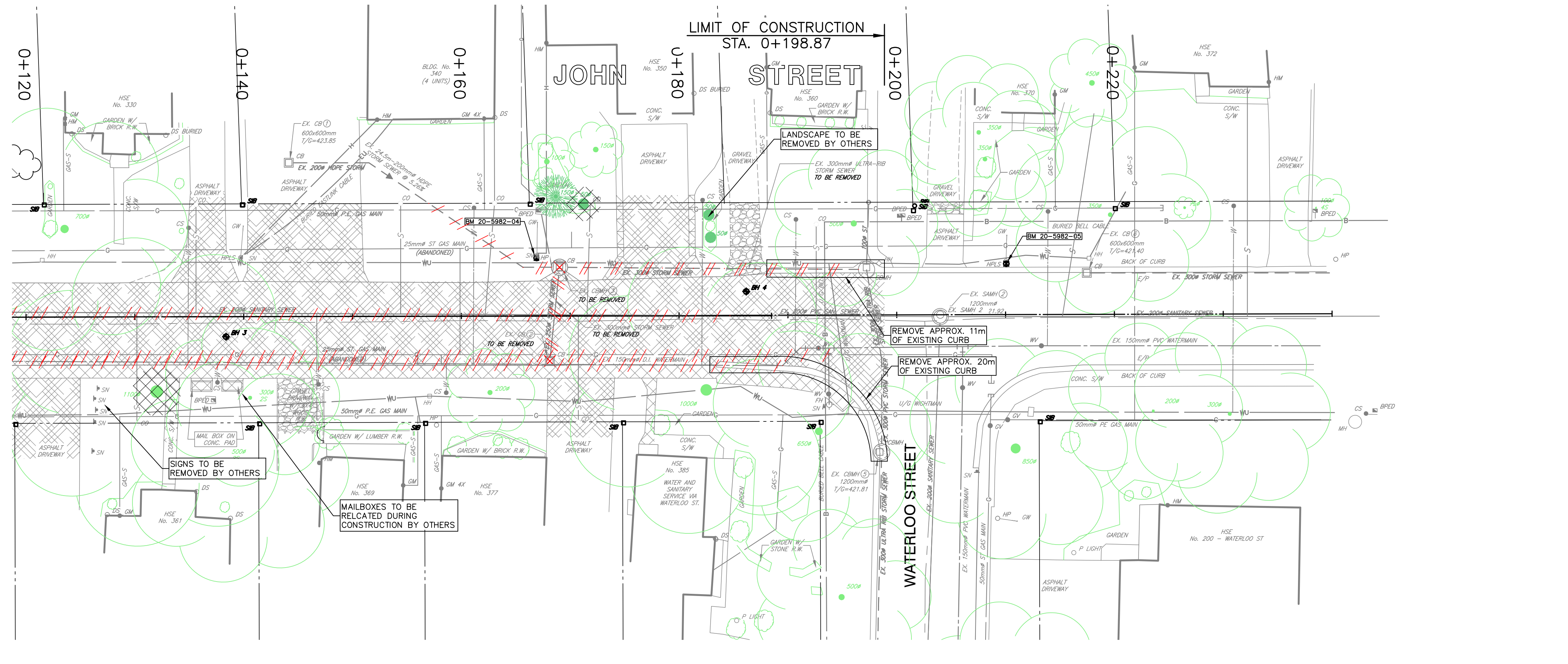


LEGEND:

	ASPHALT REMOVAL
	GRAVEL DRIVEWAY REMOVAL
	CONCRETE SIDEWALK REMOVAL
	SEWER/WATERMAIN/GAS PIPE REMOVAL
	STRUCTURE REMOVAL
	TREE REMOVAL/CLEARING & GRUBBING



B.M. 20-5982-1	Elev. 424.208
NAIL & WASHERS IN HP, ON SOUTH EAST CORNER OF QUEEN STREET WEST AND JOHN STREET	
B.M. 20-5982-2	Elev. 424.760
NAIL & WASHERS IN HP, ON THE EAST SIDE OF JOHN STREET IN BETWEEN 301 & 319 MAIN STREET SOUTH	
B.M. 20-5982-3	Elev. 424.551
NAIL & WASHERS IN HP, ON THE EAST SIDE OF JOHN STREET IN FRONT OF HOUSE 320	

DISCLAIMERS:

- ALL EXISTING ELEVATIONS & DIMENSIONS TO BE CONFIRMED ON SITE. THE LOCATION OF UTILITIES IS APPROXIMATE ONLY AND SHOULD BE DETERMINED BY CONSULTING THE MUNICIPAL AUTHORITIES AND UTILITY COMPANIES CONCERNED. THE CONTRACTOR SHALL PROVE THE LOCATION OF UTILITIES AND SHALL BE RESPONSIBLE FOR ADEQUATE PROTECTION AGAINST DAMAGE.

No	DATE	REVISION	INITIAL
3	2025/02/19	ISSUED FOR PUBLIC INFORMATION	L.S.
2	2025/01/31	ISSUED FOR TENDER	L.S.
1	2020/12/23	ISSUED FOR APPROVALS	L.S.

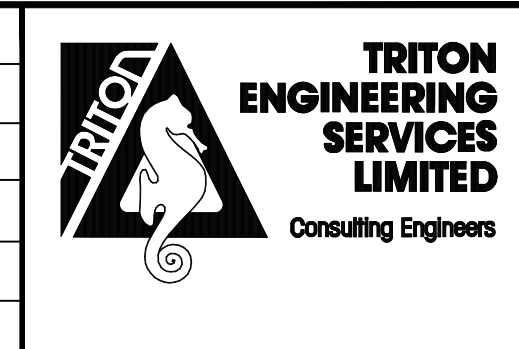
**RECONSTRUCTION OF
JOHN STREET**

TOWNSHIP OF WELLINGTON NORTH
(MOUNT FOREST)

TOWNSHIP OF WELLINGTON NORTH
7490 SIDEROAD 7 WEST
KENILWORTH, ON N0G 2E0

REMOVALS PLAN

CONTRACT No.	2025-003
PROJECT No.	M5982
DESIGNED BY:	A.S.B.
CHECKED BY:	P.F.Z.
APPROVED BY:	L.S.
DATE:	DECEMBER 2024



SCALE: H: 1:250 V: 1:## (065247)	H: 1:500 V: 1:## (175117)
	UNLESS OTHERWISE SHOWN
	DRAWING NUMBER 01

ARCH full bleed D (36.00 x 24.00 inches)

LEGEND:

- 150mm GRAN. "A",
150mm GRAN. "B"
- 50mm HL3C, 150mm GRAN. "A",
150mm GRAN. "B" (COMMERCIAL)
- 70mm HL3C, 150mm GRAN. "A",
150mm GRAN. "B" (COMMERCIAL)
- CONCRETE SIDEWALK
- TACTILE PLATE AS PER OPSD 310.039
- DROP CURB
- CURB TRANSITION
- PROPOSED WATER SERVICE
- PROPOSED SANITARY SERVICE
- PROPOSED STORM SERVICE
- WATER VALVE
- TREE REMOVAL

NOTES:

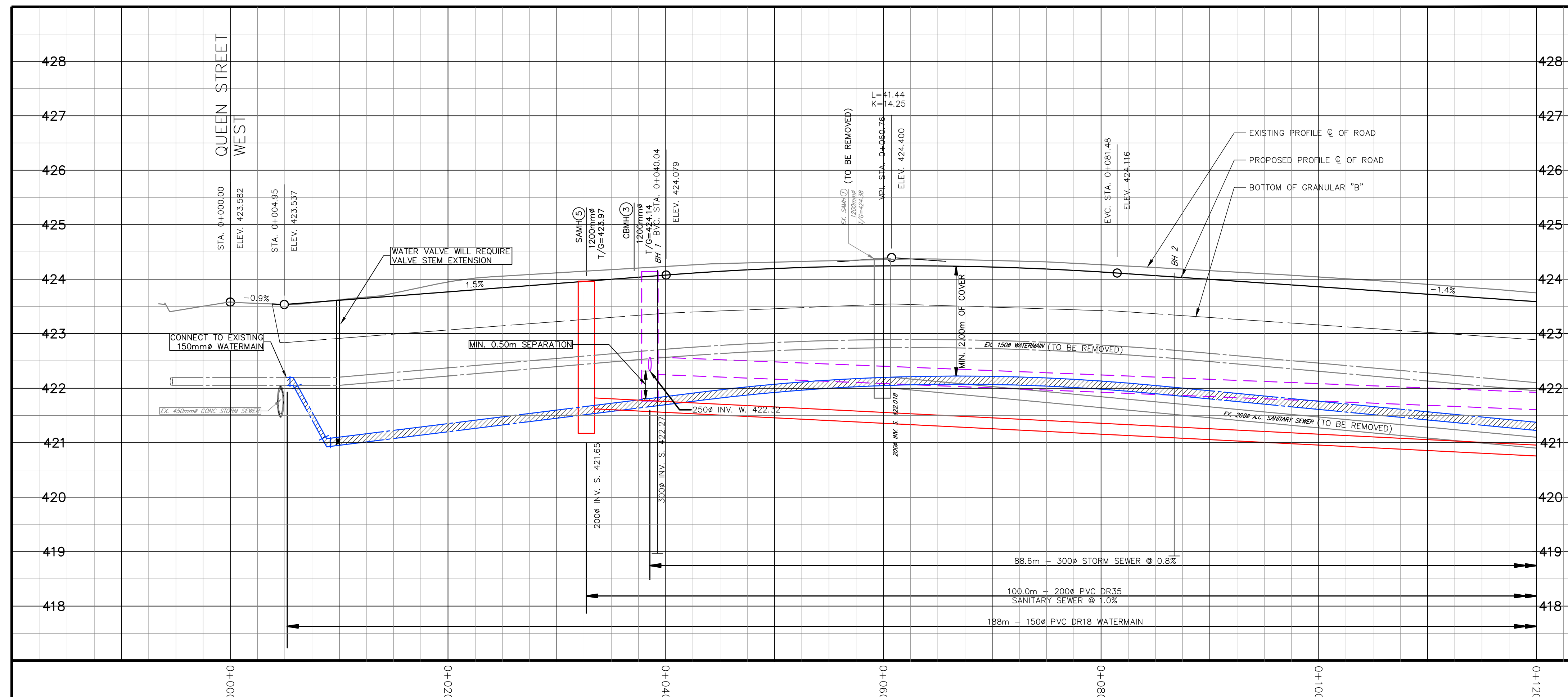
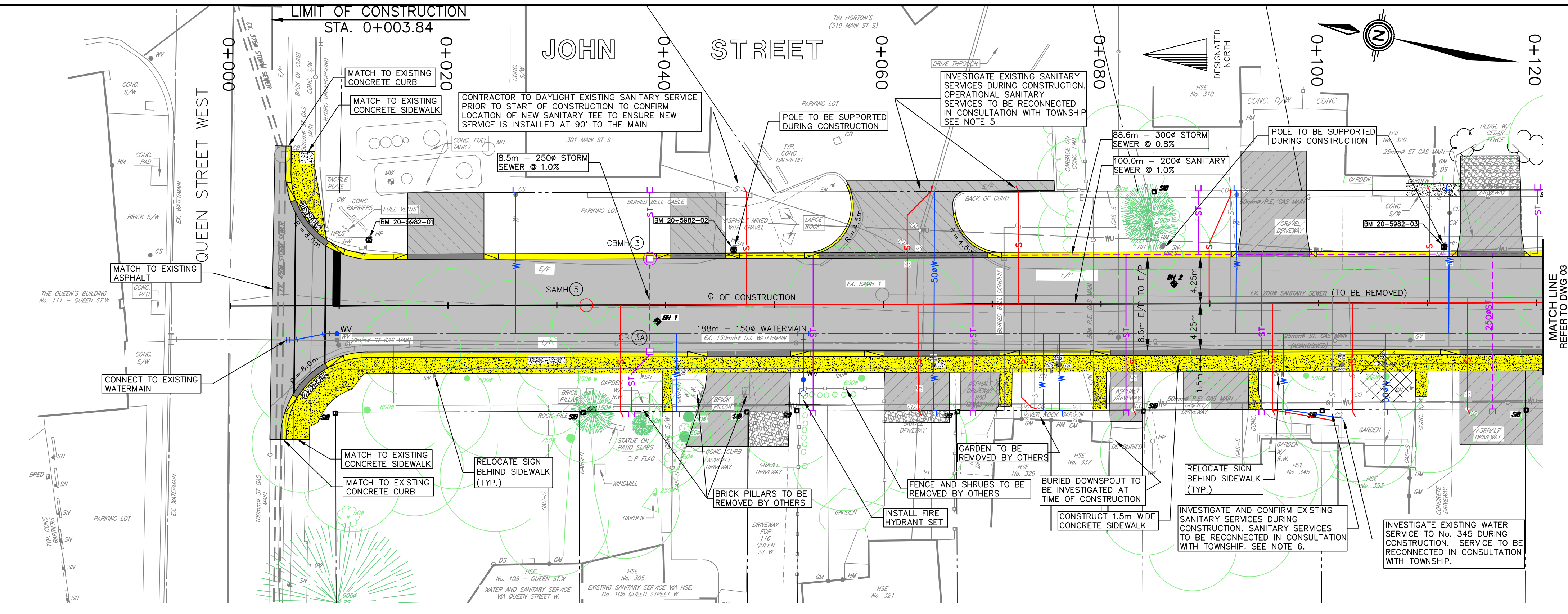
1. INSTALL NEW 25 MM DIAMETER WATER SERVICE FROM NEW 150 MM DIAMETER WATERMAIN TO PROPERTY LINE AND CONNECT TO EXISTING WATER SERVICE FOR 301 MAIN ST S AND HOUSE NO. 305, 310, 320, 321, 329, 337, AND 345.
2. INSTALL NEW 50 MM DIAMETER WATER SERVICE FROM NEW 150 MM DIAMETER WATERMAIN TO PROPERTY LINE AND CONNECT TO EXISTING WATER SERVICE FOR TIM HORTONS (319 MAIN ST S) AND HOUSE NO. 353.
3. INSTALL NEW 125 MM DIAMETER SANITARY SERVICE FROM NEW 200 MM DIAMETER SANITARY SEWER TO PROPERTY LINE AND CONNECT TO EXISTING SANITARY SERVICE FOR HOUSE NO. 310, 320, 321, 329, 337 AND 345.
4. INSTALL NEW 125mm DIAMETER SANITARY SERVICE AND MARKER FROM NEW 200mm DIAMETER SANITARY SEWER TO PROPERTY LINE FOR HOUSE NO. 305 JOHN ST.
5. INVESTIGATE EXISTING SANITARY SERVICES FOR TIM HORTONS (319 MAIN ST S) AT THE TIME OF CONSTRUCTION TO DETERMINE IF OPERATIONAL. IF MULTIPLE SERVICES ARE OPERATIONAL, INSTALL NEW 125 MM DIAMETER SANITARY SERVICES FROM NEW 200 MM DIAMETER SANITARY SEWER TO PROPERTY LINE AND CONNECT TO EXISTING SANITARY SERVICES. IF ONLY ONE SANITARY SERVICE IS OPERATIONAL, OR IF IT IS FEASIBLE TO RECONNECT THE EXISTING SANITARY SERVICE TO A NEW SINGULAR SERVICE, THEN INSTALL NEW 150 MM DIAMETER SANITARY SERVICE FROM NEW 200 MM DIAMETER SANITARY SEWER TO PROPERTY LINE AND CONNECT TO EXISTING SANITARY SERVICE(S).
6. INVESTIGATE EXISTING SANITARY SERVICES FOR HOUSE NO. 353 AT THE TIME OF CONSTRUCTION TO DETERMINE THE FEASIBILITY OF RECONNECTING THE EXISTING SERVICES TO A NEW SINGULAR 150 MM DIAMETER SANITARY SERVICE FROM NEW 200 MM DIAMETER SANITARY SEWER TO PROPERTY LINE. IF NOT FEASIBLE, THEN INSTALL NEW 150 MM DIAMETER SANITARY SERVICES FROM NEW 200 MM DIAMETER SANITARY SEWER TO PROPERTY LINE AND CONNECT TO EXISTING SANITARY SERVICES.
7. INSTALL NEW 100 MM DIAMETER STORM SERVICE AND MARKER FROM NEW 300 MM DIAMETER STORM SEWER TO PROPERTY LINE FOR BUILDING NO. 301 MAIN ST S, HOUSE NO 305, 310, 320, 321, 329, 337, AND 345. LOCATIONS TO BE DETERMINED AT THE TIME OF CONSTRUCTION.
8. INSTALL NEW 250 MM DIAMETER STORM SERVICE AND MARKER FROM NEW 300 MM DIAMETER STORM SEWER TO PROPERTY LINE FOR BUILDING NO. 353. LOCATION TO BE DETERMINED AT THE TIME OF CONSTRUCTION.
9. SANITARY SERVICES TO BE INSTALLED WITH A MINIMUM OF 2.4 M OF COVER AT PROPERTY LINE (WHERE MAINLINE SEWER ELEVATION ALLOWS), UNLESS NOTED OTHERWISE. CONTRACTOR TO USE VERTICAL SWEEPS AND FITTINGS, AS REQUIRED, TO CONNECT TO EXISTING SERVICES AT PROPERTY LINE.
10. SEPARATION DISTANCES BETWEEN SEWERS AND WATERMANS AND SEWER SERVICES AND WATER SERVICES SHALL BE AS PER MECP PROCEDURE F-6-1. IN GENERAL, 2.5 M HORIZONTAL SEPARATION BETWEEN PARALLEL INSTALLATIONS AND 0.5 M VERTICAL SEPARATION AT CROSSINGS WHERE THE WATERMAIN OR WATER SERVICE CROSSES UNDER THE SEWER. WHERE THIS SPATIAL SEPARATION CANNOT BE ACHIEVED, OTHER MEASURES ARE TO BE IMPLEMENTED, SUCH AS USE OF PRESSURE PIPE (350 KPA) FOR SEWERS, AS TO BE APPROVED BY THE CONTRACT ADMINISTRATOR.
11. FOR TYPICAL ROAD SECTIONS, REFER TO DWG. NO. 04.
12. CONCRETE SIDEWALK ADJACENT TO THE CURB IS TO BE 150 MM THICK.

B.M. 20-5982-1	Elev. 424.208
NAIL & WASHERS IN HP, ON SOUTH EAST CORNER OF QUEEN STREET WEST AND JOHN STREET	
B.M. 20-5982-2	Elev. 424.760
NAIL & WASHERS IN HP, ON THE EAST SIDE OF JOHN STREET BETWEEN 301 & 319 MAIN STREET SOUTH	
B.M. 20-5982-3	Elev. 424.551
NAIL & WASHERS IN HP, ON THE EAST SIDE OF JOHN STREET IN FRONT OF HOUSE 320	

DISCLAIMERS:

1. ALL EXISTING ELEVATIONS & DIMENSIONS TO BE CONFIRMED ON SITE. THE LOCATION OF UTILITIES IS APPROXIMATE ONLY AND SHOULD BE DETERMINED BY CONSULTING THE MUNICIPAL AUTHORITIES AND UTILITY COMPANIES CONCERNED. THE CONTRACTOR SHALL PROVE THE LOCATION OF UTILITIES AND SHALL BE RESPONSIBLE FOR ADEQUATE PROTECTION AGAINST DAMAGE.

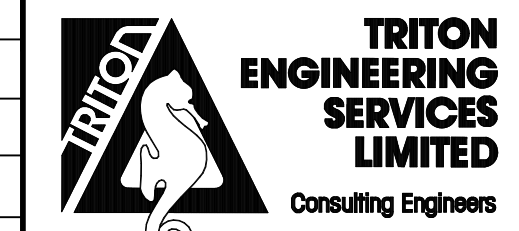
No	DATE	REVISION	INITIAL
4	2025/02/19	ISSUED FOR PUBLIC INFORMATION	L.S.
3	2025/01/31	ISSUED FOR TENDER	L.S.
2	2023/10/23	ISSUED FOR PUBLIC INFORMATION	L.S.
1	2020/12/23	ISSUED FOR APPROVALS	L.S.



**RECONSTRUCTION OF
JOHN STREET**
TOWNSHIP OF WELLINGTON NORTH
(MOUNT FOREST)

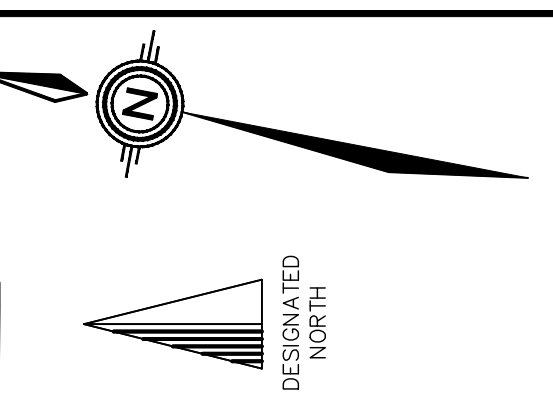
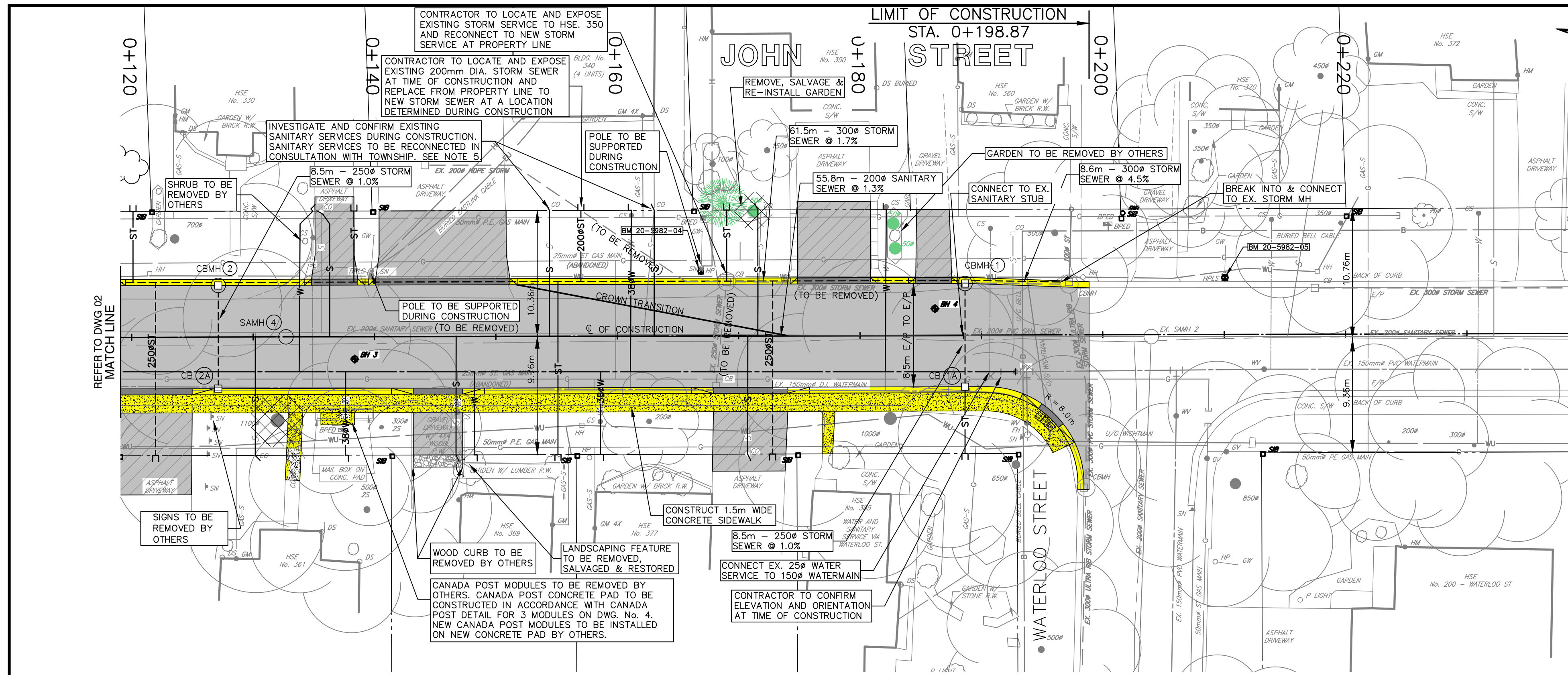
TOWNSHIP OF WELLINGTON NORTH
7490 SIDEROAD 7 WEST
KENILWORTH, ON N0G 2E0
**PLAN AND PROFILE
FROM QUEEN ST W TO STA. 0+120**

CONTRACT No. 2025-003
PROJECT No. M5982
DESIGNED BY: A.S.B.
CHECKED BY: P.F.Z.
APPROVED BY: L.S.
DATE: NOVEMBER 2024



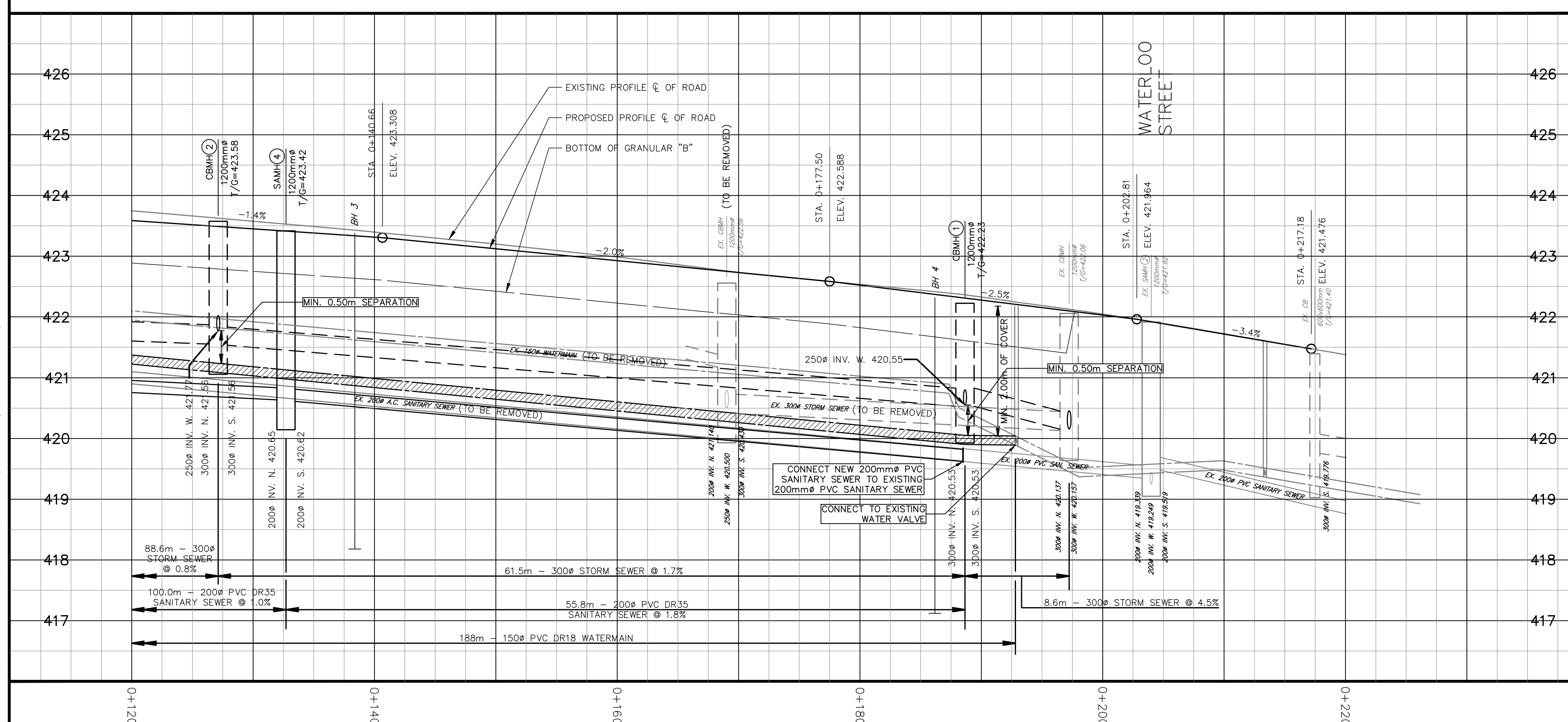
SCALE:
H:1:250 H:1:500
V:1:## V:1:##
(06247) (175117)
UNLESS OTHERWISE SHOWN
DRAWING NUMBER 02

C:\Wellington\scott - trap\04\15982 - john st recon (town of w. of wellington north)\trader\dwg\03\15982_coad\plan.dwg - 2025-02-19 - addnotes



- LEGEND:**
- 150mm GRAN. "A", 150mm GRAN. "B"
 - 50mm HL3C, 150mm GRAN. "A", 150mm GRAN. "B"
 - CONCRETE SIDEWALK
 - TACTILE PLATE AS PER OPSD 310.039
 - DROP CURB
 - CURB TRANSITION
 - PROPOSED WATER SERVICE
 - PROPOSED SANITARY SERVICE
 - PROPOSED STORM SERVICE
 - WATER VALVE
 - TREE REMOVAL

- NOTES:**
- INSTALL NEW 25 MM DIAMETER WATER SERVICE FROM NEW 150 MM DIAMETER WATERMAIN TO PROPERTY LINE AND CONNECT TO EXISTING WATER SERVICE FOR HOUSE NO. 330, 350, AND 369.
 - INSTALL NEW 38 MM DIAMETER WATER SERVICE FROM NEW 150 MM DIAMETER WATERMAIN TO PROPERTY LINE AND CONNECT TO EXISTING WATER SERVICE FOR HOUSE NO. 340, 361 AND 377.
 - INSTALL NEW 125 MM DIAMETER SANITARY SERVICE FROM NEW 200 MM DIAMETER SANITARY SEWER TO PROPERTY LINE AND CONNECT TO EXISTING SANITARY SERVICE FOR HOUSE NO. 330, 350, AND 369.
 - INSTALL NEW 150 MM DIAMETER SANITARY SERVICE FROM NEW 200 MM DIAMETER SANITARY SEWER TO PROPERTY LINE AND CONNECT TO EXISTING SANITARY SERVICE FOR HOUSE NO. 361 AND 377.
 - INVESTIGATE EXISTING SANITARY SERVICES FOR HOUSE NO. 340 AT THE TIME OF CONSTRUCTION TO DETERMINE THE FEASIBILITY OF RECONNECTING THE EXISTING SERVICES TO A NEW SINGULAR 150 MM DIAMETER SANITARY SERVICE FROM NEW 200 MM DIAMETER SANITARY SEWER TO PROPERTY LINE. IF NOT FEASIBLE, THEN INSTALL NEW 125 MM DIAMETER SANITARY SERVICES FROM NEW 200 MM DIAMETER SANITARY SEWER TO PROPERTY LINE AND CONNECT TO EXISTING SANITARY SERVICES.
 - INSTALL NEW 100 MM DIAMETER STORM SERVICE AND MARKER FROM NEW 300 MM DIAMETER STORM SEWER TO PROPERTY LINE FOR HOUSE NO. 330, 369, AND 385. LOCATIONS TO BE DETERMINED AT THE TIME OF CONSTRUCTION.
 - INSTALL NEW INLINE DRAIN FROM NEW 300 MM DIAMETER STORM SEWER AND CONNECT TO EXISTING STORM SERVICE FOR HOUSE NO. 350. CONTRACTOR TO LOCATE AND EXPOSE EXISTING STORM SERVICE DURING CONSTRUCTION. LOCATION OF INLINE DRAIN TO BE DETERMINED AT THE TIME OF CONSTRUCTION.
 - INSTALL NEW 200 MM DIAMETER STORM SERVICE FROM NEW 300 MM DIAMETER STORM SEWER TO PROPERTY LINE AND CONNECT TO EXISTING STORM SERVICE FOR HOUSE NO. 340. CONTRACTOR TO LOCATE AND EXPOSE EXISTING STORM SERVICE DURING CONSTRUCTION.
 - INSTALL NEW 250 MM DIAMETER STORM SERVICE AND MARKER FROM NEW 300 MM DIAMETER STORM SEWER TO PROPERTY LINE FOR BUILDING NO. 361 AND 377. LOCATIONS TO BE DETERMINED AT THE TIME OF CONSTRUCTION.
 - SANITARY SERVICES TO BE INSTALLED WITH A MINIMUM OF 2.4 M OF COVER AT PROPERTY LINE (WHERE MAINLINE SEWER ELEVATION ALLOWS), UNLESS NOTED OTHERWISE. CONTRACTOR TO USE VERTICAL SWEEPS AND FITTINGS, AS REQUIRED, TO CONNECT TO EXISTING SERVICES AT PROPERTY LINE.
 - SEPARATION DISTANCES BETWEEN SEWERS AND WATERMANS AND WATER SERVICES AND WATER SERVICES SHALL BE AS PER MECP PROCEDURE F-6-1; IN GENERAL, 2.5 M HORIZONTAL SEPARATION BETWEEN PARALLEL INSTALLATIONS AND 0.5 M VERTICAL SEPARATION AT CROSSINGS WHERE THE WATERMAIN OR WATER SERVICE CROSSES UNDER THE SEWER. WHERE THIS SPATIAL SEPARATION CANNOT BE ACHIEVED, OTHER MEASURES ARE TO BE IMPLEMENTED, SUCH AS USE OF PRESSURE PIPE (350 KPA) FOR SEWERS, AS TO BE APPROVED BY THE CONTRACT ADMINISTRATOR.
 - FOR TYPICAL ROAD SECTIONS, REFER TO DWG. NO. 04.



B.M. 20-5982-4	Elev. 423.256
NAIL & WASHERS IN HP, ON THE EAST SIDE OF JOHN STREET IN BETWEEN HOUSE 340 & HOUSE 350	
B.M. 20-5982-5	Elev. 422.275
NAIL & WASHERS IN HP, ON THE EAST SIDE OF JOHN STREET IN FRONT OF HOUSE 370	
B.M. 20-5982-6	Elev. 421.939
NAIL & WASHERS IN HP, ON SOUTH SIDE OF WATERLOO STREET IN FRONT OF HOUSE 220	

DISCLAIMERS:

- ALL EXISTING ELEVATIONS & DIMENSIONS TO BE CONFIRMED ON SITE. THE LOCATION OF UTILITIES IS APPROXIMATE ONLY AND SHOULD BE DETERMINED BY CONSULTING THE MUNICIPAL AUTHORITIES AND UTILITY COMPANIES CONCERNED. THE CONTRACTOR SHALL PROVE THE LOCATION OF UTILITIES AND SHALL BE RESPONSIBLE FOR ADEQUATE PROTECTION AGAINST DAMAGE.

No	DATE	REVISION	INITIAL
4	2025/02/19	ISSUED FOR PUBLIC INFORMATION	L.S.
3	2025/01/31	ISSUED FOR TENDER	L.S.
2	2023/10/23	ISSUED FOR PUBLIC INFORMATION	L.S.
1	2020/12/23	ISSUED FOR APPROVALS	L.S.

**RECONSTRUCTION OF
JOHN STREET**

TOWNSHIP OF WELLINGTON NORTH
(MOUNT FOREST)

TOWNSHIP OF WELLINGTON NORTH
7490 SIDEROAD 7 WEST
KENILWORTH, ON N0G 2E0

**PLAN AND PROFILE
FROM STA. 0+120 TO WATERLOO ST**

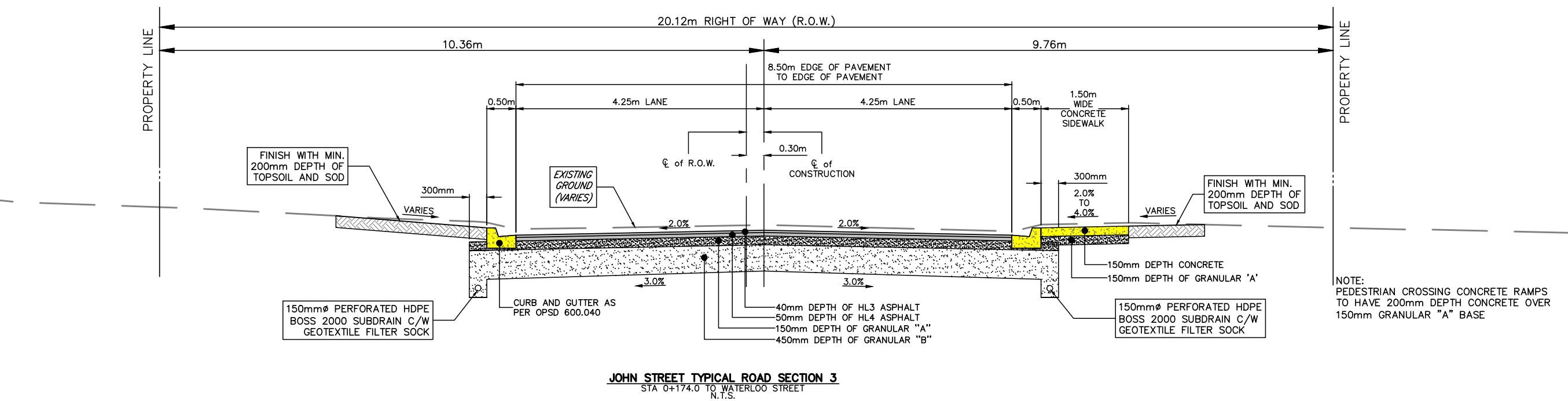
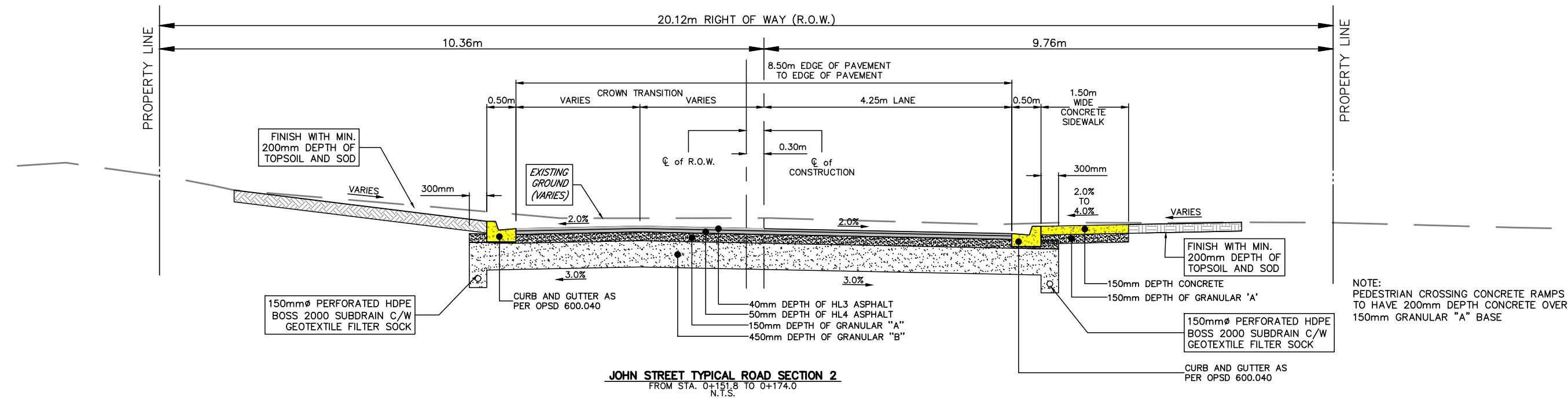
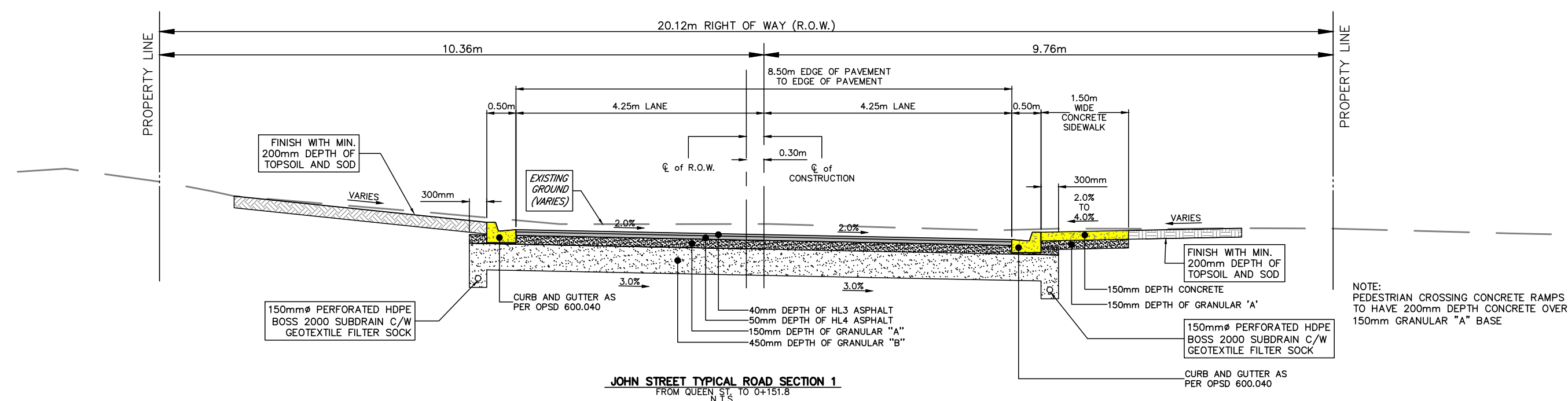
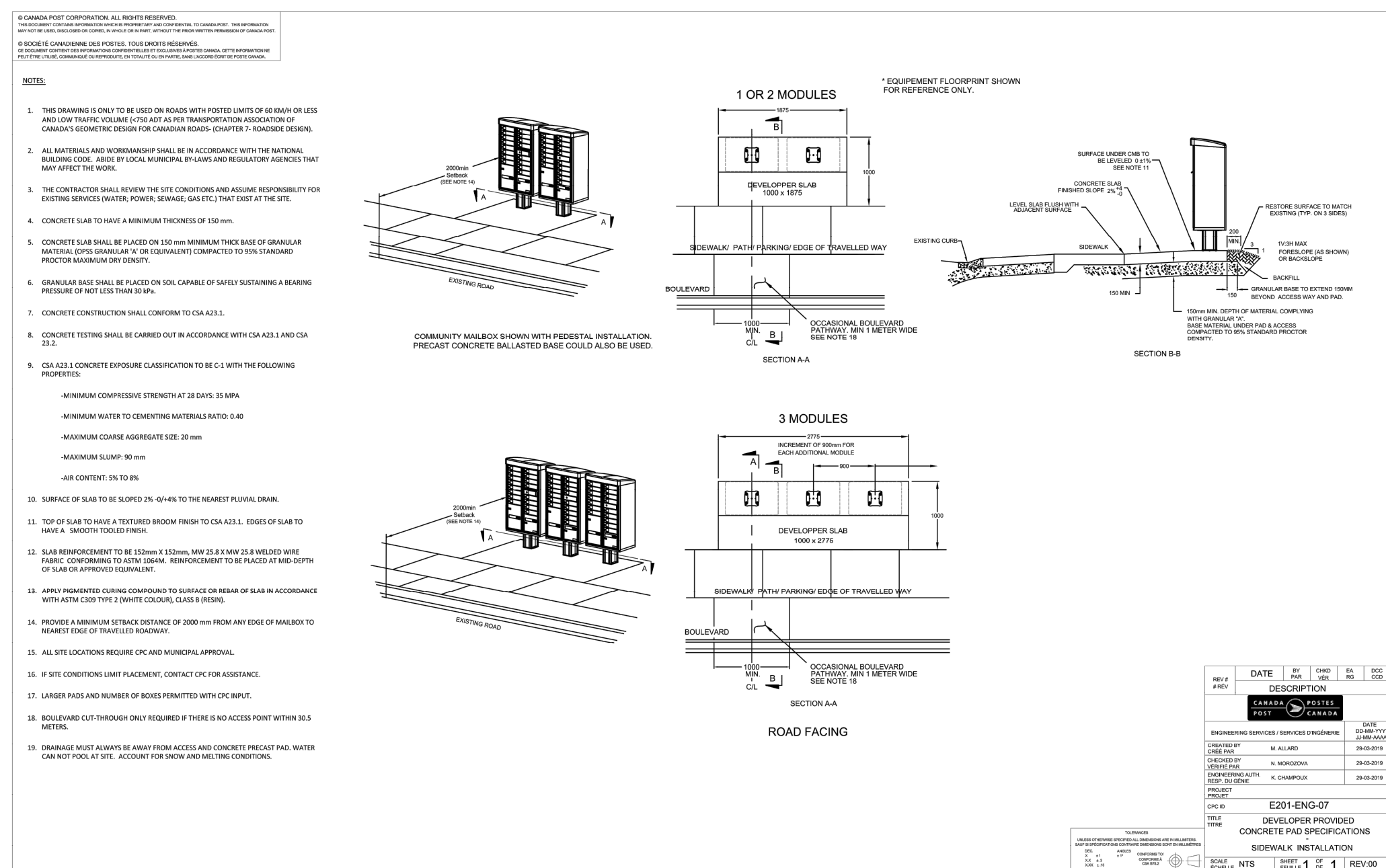
CONTRACT No. 2025-003
PROJECT No. M5982
DESIGNED BY: A.S.B.
CHECKED BY: P.F.Z.
APPROVED BY: L.S.
DATE: NOVEMBER 2024



SCALE:
H:1:250 H:1:500
V:1:## V:1:##
(08247) (17517)
UNLESS OTHERWISE SHOWN

DRAWING NUMBER
03

C:\Wellington\2025\2025-003\2025-003-01-19 - addendum



DISCLAIMERS:
1. ALL EXISTING ELEVATIONS & DIMENSIONS TO BE CONFIRMED ON SITE. THE LOCATION OF UTILITIES IS APPROXIMATE ONLY AND SHOULD BE DETERMINED BY CONSULTING THE MUNICIPAL AUTHORITIES AND UTILITY COMPANIES CONCERNED. THE CONTRACTOR SHALL PROVE THE LOCATION OF UTILITIES AND SHALL BE RESPONSIBLE FOR ADEQUATE PROTECTION AGAINST DAMAGE.

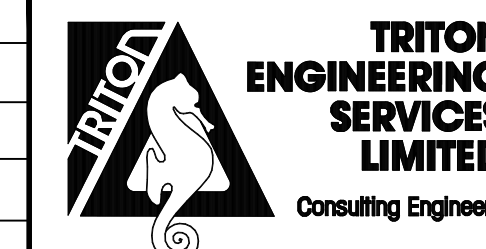
No	DATE	REVISION	INITIAL
2	2025/02/19	ISSUED FOR PUBLIC INFORMATION	L.S.
1	2025/01/31	ISSUED FOR TENDER	L.S.

RECONSTRUCTION OF JOHN STREET
TOWNSHIP OF WELLINGTON NORTH (MOUNT FOREST)

TOWNSHIP OF WELLINGTON NORTH
7490 SIDEROAD 7 WEST
KENILWORTH, ON N0G 2E0

TYPICAL SECTIONS

CONTRACT No. 2025-003
PROJECT No. M5982
DESIGNED BY: A.S.B.
CHECKED BY: P.F.Z.
APPROVED BY: L.S.
DATE: DECEMBER 2024



SCALE:
N.T.S.
UNLESS OTHERWISE SHOWN

DRAWING NUMBER **04**